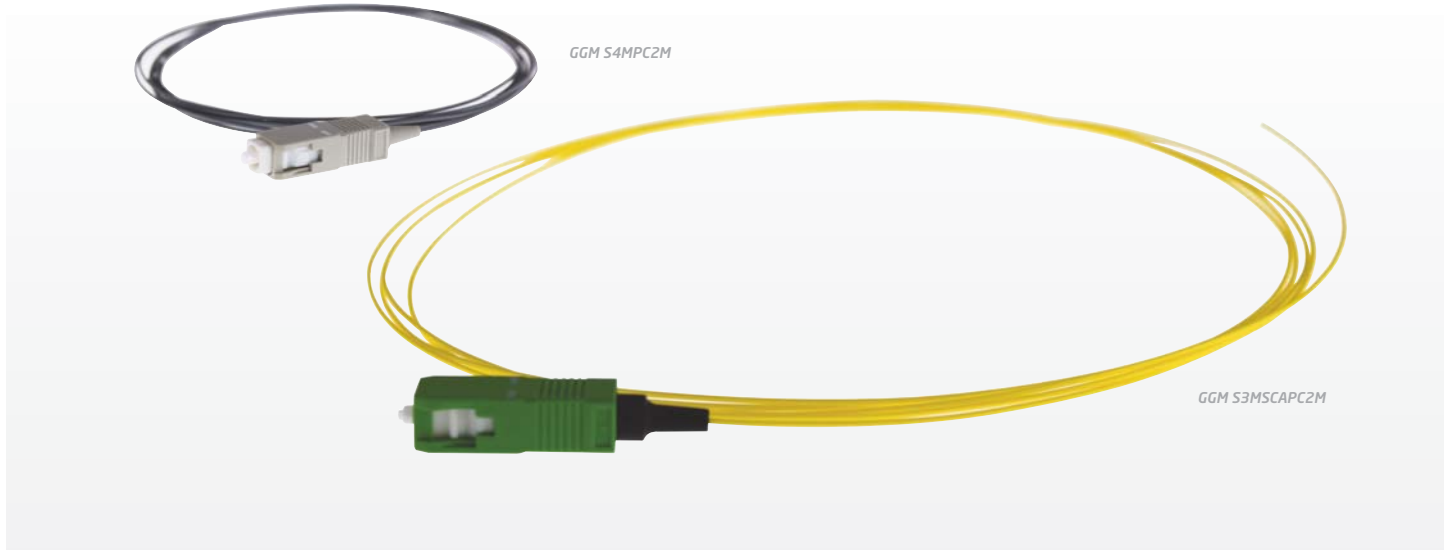


## PIGTAILS SC & SC/APC SINGLE OR 12 PACKED



Thanks to a stringent quality policy & individual inspection/testing of each manufactured piece, Gigamedia patchcords offer a high level of performance at a fair price. Each patchcord is packaged individually and delivered with a unique serial number & individual IL/RL test report.

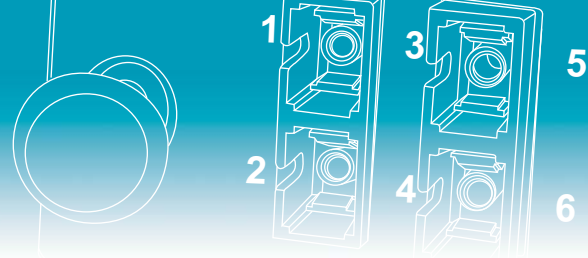
### MECHANICAL PROPERTIES

	G657	OM4	OS2	OM2	OM3
<b>Connector body</b>	plastic	plastic	plastic	plastic	plastic
<b>Ferule surface</b>	convex	convex	convex	convex	convex
<b>Core Diameter</b>	8.8 ± 0.4µm	50 ± 2.5µm	9.2 ± 0.4µm	50 ± 2.5µm	50 ± 2.5µm
<b>Cladding diameter</b>	125 ± 0.7µm	125 ± 2.0µm	125 ± 1.0µm		
<b>Cladding non-circularity</b>	≤ 0.7%	≤ 1.0%	≤ 1.0%	≤ 1.0%	≤ 1.0%
<b>Core/cladding concentricity error</b>	≤ 0.5µm	≤ 1.5µm	≤ 0.6µm		
<b>Ferule material</b>	ceramic (ZrO2) inner diameter 126µm	ceramic (ZrO2) inner diameter 127µm	ceramic (ZrO2) inner diameter 126µm	ceramic (ZrO2) inner diameter 127µm	ceramic (ZrO2) inner diameter 127µm
<b>Polishing method</b>	APC	PC	UPC or APC	PC	PC

### OPTICAL PROPERTIES

	OM4	OM3	OM2
<b>Typical loss</b>	≤ 2,7dB/km (850nm) ≤ 0,8dB/km (1300nm)	≤ 2,7dB/km (850nm) ≤ 0,8dB/km (1300nm)	≤ 2,8dB/km (850nm) ≤ 0,8dB/km (1300nm)
<b>Bandwith (MHz.km)</b>	≥ 3500MHz.km (850nm - OFL) ≥ 500MHz.km (1300nm - OFL) ≥ 4700MHz.km (850nm - EMBc*)	≥ 1500MHz.km (850nm - OFL) ≥ 500MHz.km (1300nm - OFL) ≥ 2000MHz.km (850nm - EMBc*)	≥ 500MHz.km (850nm - OFL) ≥ 500MHz.km (1300nm - OFL)
<b>Typical insertion loss</b>	≤ 0,15dB	≤ 0,15dB	≤ 0,15dB
<b>Max. insertion loss</b>	≤ 0,25dB	≤ 0,25dB	≤ 0,25dB
<b>Typical Return Loss</b>	≥ 35dB	≥ 35dB	≥ 35dB
<b>Mating cycles</b>	1000 (variation 0,2dB)	1000 (variation 0,2dB)	1000 (variation 0,2dB)

\*EMBc calculated thanks to the DMD mask Method



	OS2 SC/UPC		OS2 SC/APC	
<b>Typical cable Loss</b>	≤ 0.39dB/km (1310-1625nm)	≤ 0.25dB/km (1550nm)	≤ 0.39dB/km (1310-1625nm)	≤ 0.25dB/km (1550nm)
<b>Chromatic dispersion</b>	≤ 3ps/nm*km (1285-1330nm)	≤ 18ps/nm*km (1550nm)	≤ 3ps/nm*km (1285-1330nm)	≤ 18ps/nm*km (1550nm)
<b>Typical Insertion Loss</b>	≤ 0,15dB		≤ 0,15dB	
<b>Max. Insertion Loss</b>	≤ 0,25dB		≤ 0,25dB	
<b>Typical Return Loss</b>	≥ 50dB		≥ 65dB	
<b>Mating cycles</b>	1000 (variation 0,2dB)		1000 (variation 0,2dB)	

## CABLE MECHANICAL PROPERTIES

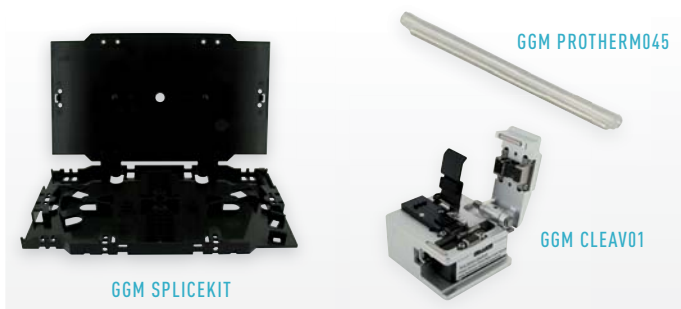
	OM4	OS2	OM3	OM2	G657
<b>Construction</b>			tight buffer 900µm "Easy strip"		
<b>Tensile strength</b>			3N		
<b>Crush resistance</b>			0.1N/mm, max 1N/mm short term		
<b>Min. Bending radius during installation</b>			30 mm		
<b>Temperature range during operation</b>			-5°C à +60°C		
<b>Outer sheath material</b>			LSHF		
<b>Outer sheath color</b>	Aqua	Yellow	Grey	Green	Yellow

Color code: IEC.

## COMPLIANCE

- IEC 61754-3 ; Bellcore/Telcordia GR-326; EIA/TIA 604-4
- EIA/TIA 568; ISO/IEC 11801 2nd Ed, EN 50173; JIS C5973 F04; ITU-T G651; ITU-T G652D; ITU-T G652B
- IEEE 802.3

## ACCESSORIES



P/N	DESCRIPTION
<b>GGM SPLICEKIT</b>	Splice tray kit for 2x6 fusion splices + cover, strain relief comb & fixing clips
<b>GGM PROTHERM045</b>	45mm heat shrinkable tube
<b>GGM PROTHERM060</b>	60mm heat shrinkable tube
<b>GGM CLEAV01</b>	Fiber optic cleaver (250/900µm fiber)

## PART NUMBERS

P/N	DESCRIPTION			
<b>GGM S1MPC1M</b>	Pigtail SC	50/125	OM2	1m
<b>GGM S1MPC2M</b>	Pigtail SC	50/125	OM2	2m
<b>GGM S3MPC1M</b>	Pigtail SC	9/125	OS2	1m
<b>GGM S3MPC2M</b>	Pigtail SC	9/125	OS2	2m
<b>GGM S3MSCAPC2M</b>	Pigtail SC/APC	9/125	OS2	2m
<b>GGM S4MPC2M</b>	Pigtail SC	50/125	OM3	2m
<b>GGM S5MPC1M</b>	Pigtail SC	50/125	OM4	1m
<b>GGM S5MPC2M</b>	Pigtail SC	50/125	OM4	2m
<b>GGM S1MPC2ML</b>	12 packed SC OM2 colored pigtails			2m
<b>GGM S3MPC2ML</b>	12 packed SC OS2 colored pigtails			2m
<b>GGM S3MSCAPC2ML</b>	12 packed SC/APC OS2 colored pigtails			2m
<b>GGM S4MPC2ML</b>	12 packed SC OM3 colored pigtails			2m