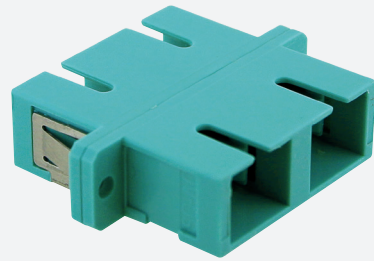




MULTIMODE CONNECTOR

GGM RACCCP2AQUA



SC duplex multimode adaptor
Plastic body
Aqua colour
Ceramic sleeve

Fiber optic adapters (or bulkheads) allow two fibers equipped with connectors (pre-connectorized optical fibers, patchcords, etc...) to be connected to each other, via a ceramic sleeve.

This process ensures optimized insertion loss and reflectance at the point of contact.

FEATURES

Sleeve :	Ceramic
Connector format :	SC duplex
Adapted type of fibre :	Multi mode
Connector A :	SC
Connector B :	SC duplex
Housing material :	Plastic
Sleeve material :	Ceramics
Connection method :	Screw/snap in
Colour :	Turquoise

PART NUMBER	DESCRIPTION
GGM RACCCP2AQUA	SC duplex multimode adaptor, plastic body, aqua colour, ceramic sleeve