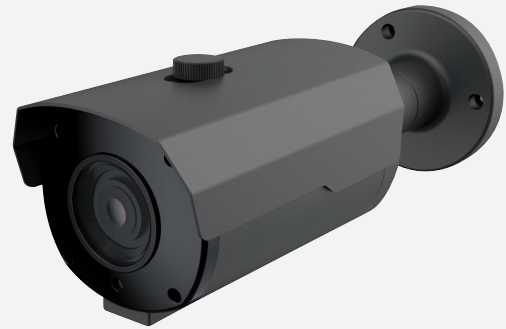




## IP TUBE CAMERA

GGM IPCB5MV12EG



5MP

AI READY 2.7-13.5MM BLACK

The "Dark Series" **GIGAMEDIA** IP cameras almost disappear in sombre environments. They are equipped with the latest technologies allowing for sophisticated image treatment and supplies optimal results by day as by night.

The SONY STARVIS sensor provides colour results in low light level conditions. Its calculation capacity allows for inbuilt intelligent functions giving advanced alarm treatment. They can also be positioned inside the alarm camera directly regarding crossing lines, intrusion into a defined zone, counting, pedestrian detection, or even detection of stationary objects in a zone.

These cameras supply 5 Megapixel images in real time and have the latest infrared LED technology for high quality night vision.

This tube camera provides effective surveillance for perimeters, corridors or even open spaces.

ARTICLE FEATURES

**Camera type:** Tube

INFORMATION SYSTEM

**CPU:** SSC338G

**Flash memory:** 128MB NAND

**RAM:** 256MB\*2

TECHNICAL FEATURES

**Sensor:** OS05A20, 1/2.7»CMOS STARVIS Progressive

**Sensor max. resolution:** 2592 x 1944

**Lens type:** Motorized lens

**Focal length (mm):** 2.7-13.5mm

**Focal length:** 2.8mm

**Detect 5%:** 28

**Observe 10%:** 14

**Recognize 20%:** 7

**Identify 40%:** 4

**Aperture:** F No. 1.8(W) ~ 3.3(T)

**Auto iris:** Motorized

**Horizontal viewing angle (°):** 102°-31°

**Vertical viewing angle (°):** 73°-23°

**Diagonal viewing angle (°):** 38-138°

**Micro SD card slot:** Yes

**Digital input:** Yes

**Number of Digital input:** 1

**Digital output:** Yes

**Number of Digital output:** 1

**Audio in:** Yes

**Number of audio in:** 1

**Audio out:** Yes

**Number of audio out:** 1

**Built in microphone:** No

**Built-in speaker:** No

**Reset Button:** Yes

**POE:** 802.3 af

**Shutter speed:** 1/5 - 1/20000s

**Wdr (wide dynamic range):** 120 dB

**Day/Night:** Yes

**Day / night switch:** Automatic, manual, schedule

**Min. illumination:** Color 0.003lux @ F1.6(AGC ON), B/W: 0 lux @ IR ON

**IR Range:** 45 m

**Embedded storage:** Micro SD card slot max 256 GB

VIDEO

<b>Video compression:</b>	H.265+, H.265, H.264+, H.264 and MJPEG
<b>Resolution and framerate:</b>	30 fps @ 2592x1944
<b>Stream:</b>	3 simultaneous streams
<b>SNR:</b>	0
<b>Day/ Night mode:</b>	Yes
<b>IR management:</b>	Yes
<b>Picture flip/ mirror:</b>	Yes
<b>Corridor mode:</b>	Yes
<b>BLC:</b>	Yes
<b>HLC:</b>	Yes
<b>3D noise reduction:</b>	Yes
<b>Image setting:</b>	Sharpness, Brightness, Contrast, Saturation, White balance, Hue
<b>WDR management:</b>	Yes
<b>Privacy mask:</b>	4 zones
<b>Defog:</b>	No
<b>ROI:</b>	Yes

NETWORK

<b>Simultaneous connection on web:</b>	9
<b>Supported protocols:</b>	DDNS, RTP/RTSP, DNS, TCP/IP, UDP, DHCP, FTP, HTTPS, SMTP, SNMP, IPv4/IPv6, UPnP, HTTP, NTP, PPPoE
<b>Interface:</b>	RJ-45 10/100 Mbps
<b>Onvif version:</b>	ONVIF (Profile S/G/T)

PTZ

<b>PAN (°):</b>	0
<b>Number of preset:</b>	0
<b>Number of patrols:</b>	0
<b>3D Positioning:</b>	No
<b>Smart tracking:</b>	No

ANALYTICS

<b>Face detection:</b>	Yes
<b>Human and vehicle detection:</b>	Yes
<b>Perimeter Detection Intrusion:</b>	Yes
<b>Crossing Line Detection:</b>	Yes
<b>Stationary Object Detection:</b>	Yes
<b>Cross Counting:</b>	Yes
<b>Heat Map:</b>	Yes
<b>Crowd Density Detection:</b>	Yes
<b>Queue length detection:</b>	Yes

<b>Licence plate Detection:</b>	Yes
<b>Rare Sound Detection:</b>	Yes

#### ALARM AND EVENT

<b>Motion Detection:</b>	Yes
<b>Manual triggering:</b>	Yes
<b>Periodical Trigger:</b>	Yes
<b>System boot:</b>	Yes
<b>Recording notification:</b>	Yes
<b>Camera tamper detection:</b>	Yes
<b>Alarm action:</b>	Yes
<b>Flash Alarm:</b>	No
<b>Event notification:</b>	Yes (using HTTP, SMTP, FTP, NAS server)
<b>File upload:</b>	Yes (via HTTP, SMTP, FTP, NAS server and MicroSD card)

#### GENERAL INFORMATION

<b>Connector:</b>	RJ-45, 12VDC, Alarm I/O Audio I/O
<b>Power supply:</b>	PoE (802.3af) or 12 VDC
<b>Power Consumption:</b>	9,5W
<b>Diameter (mm):</b>	0
<b>Depth (mm):</b>	87
<b>Width (mm):</b>	242
<b>Height (mm):</b>	83
<b>Weight (kg):</b>	0.811
<b>Material:</b>	Metal
<b>IP Protection:</b>	IP67
<b>Operating temperature range:</b>	From -35 to 60°C
<b>Storage Temperature:</b>	De -35 à 60°C
<b>Operating humidity:</b>	95%
<b>Warranty period:</b>	24

#### OS AND REQUIRED CONFIGURATION

<b>OS:</b>	Microsoft Windows, MAC
<b>Web browser:</b>	IE10/11, Safari V12.1 above, Firefox V.52 above, Google chrome V.57 above, Edge V.79 above

PART NUMBER	DESCRIPTION
<b>GGM IPCB5MV12EG</b>	TUBE CAMERA 5MP AI READY 2.7-13.5MM BLACK