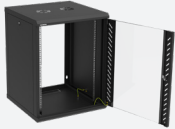




19" CABLING WALLMOUNT CABINET MODULBOX

GGM COF15U2P6MN



15 U
600 Mm depth
Black



Aesthetics, finish, functionalities, a real high quality product !

Removable door and side panels for easy access.

FEATURES

Type :	Side access
Frame :	Zinc plated steel, mechanically welded, Steel, mechanically welded
Mounting profiles :	Two 19" mounting profiles adjustable in depth (zinc plated), Two 19" mounting profiles adjustable in depth (zinc plated)
Front door :	Reversible securit glass door with side profiles, can be opened up to 180°, locked by using key lock (N°333)
Side panels :	Removable for easier access, locked by using key lock (N°333)
Cable entries :	On the top and on the bottom
Ventilation :	Ventilation openings
Width :	600 mm
Depth :	600 mm
Height :	769 mm
Capacity :	15 U
RAL :	9005 (Black)
Protection :	IP 20
Load capacity :	50 kg
Earthing kit included :	Yes

PART NUMBER

DESCRIPTION

GGM COF15U2P6MN

19" Wallmount cabinet MODULBOX 15U 600 mm depth - Black