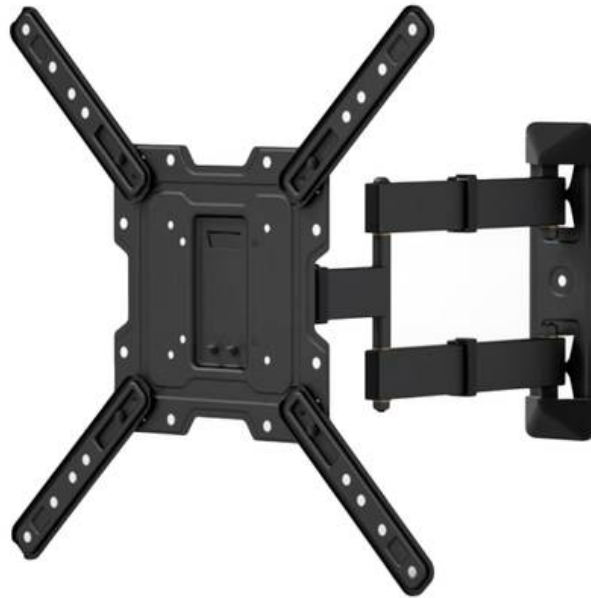




**GGM BRK10040025KW**



Tilting and swivelling wall mount for screens with maximum weight of 25 Kg. it is adapted for VESA 100-400. You can easily adjust your monitor position for an efficient view.

**Article features**

- Long description : Movable monitor bracket VESA 100-400 Maximum Weight 25 kg. Tilt up/down 30° Swivel left/right 180°Made in Steel. Indoor use

**ETIM 10 features**

- Suitable for : Monitor
- Mounting method : Wall
- Pivoting range : 180 - 180
- Angle of inclination : 15 - 15
- Load bearing capacity : 25 kg
- Colour : Black