

Centralised Dual Band wifi Acces Point 1200 Mbps GGM WAPCD3

1200 MBPS

802.11 AC/B/G/N

Repeater mode



This access point is made for indoor use. It is able to manage a bit rate of 1200 Mbps on two frequencies, 2.4 and 5 Ghz. It works with GGM WCAP100 and GGM WCAP300 controllers

Features :

Compliant

IEEE 802.11 AC/B/G/N

Frequency

2.412GHz-2.472 for 2.4GHz

5.180GHz-5.825Ghz for 5.8GHz

Protocol

**CSMA/CA
CSMA/CD
TCP/IP
ICMP 、 NAT 、 PPPoE,
DHCP , Wired static , Wifi
Client ,UDP, DDNS、**

Ports

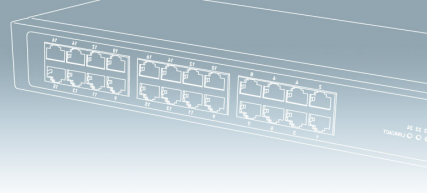
**1 * 10/100/1000 Mbps RJ45 WAN Port
1 * 10/100/1000Mbps RJ45 LAN Port
1 * Reset button,**

WAN Modulation

**BPSK, QPSK, CCK and OFDM
(BPSK/QPSK/16-QAM/ 64-QAM)**

Security

**64/128-bit WEP, WPA / WPA2,
WPA-PSK/ WPA2-PSK
encryption**



Memory

16MB flash, 128MB DDR2 RAM

Antenna

5dBi MIMO Antenna

Dimensions

Working mode

**Access point
Client
Repeater**

Power supply

Temperatures

**Working: 0 à 55°C
Stockage: -20 à 70°C**

Controller

GGM WCAP100 and GGM WCAP300