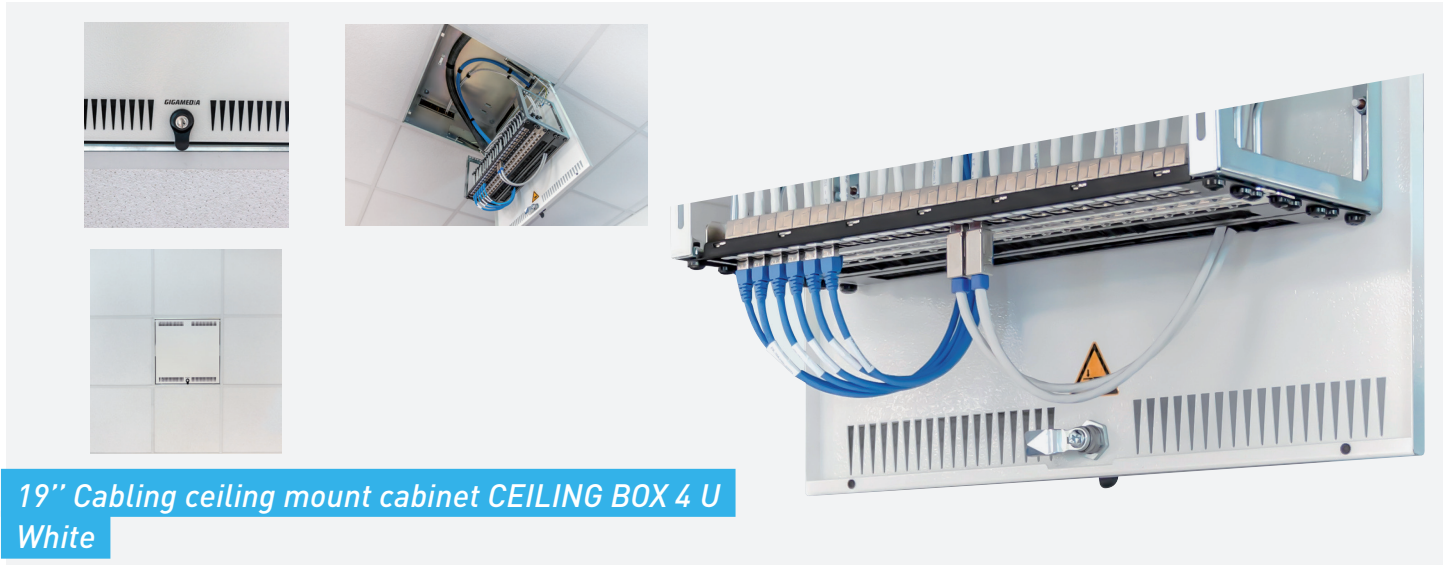




19" CEILING MOUNT CABINET CEILING BOX

GGM CBOX



19" Cabling ceiling mount cabinet CEILING BOX 4 U
White

19" cabinet for sharing access to services integrated in the suspended ceiling.

The convergence of technologies towards IP solutions Access control requires buildings to evolve in terms of network infrastructure.

The ISO 11801-6 standard for generic cabling for customer premises, in support of distributed building services, supports this change.

Pre-cabling as it used to be planned has evolved into an increasingly shared model for infrastructures that will both simplify future evolutions and guarantee long term sustainability.

The CEILING BOX is therefore the service concentration point that will provide the building's pre-cabling, its modularity and scalability.

It will discretely integrate itself in connected buildings in the suspended ceiling by taking place in the suspended ceiling tiles to simplify rewiring operations.

PRODUCT FEATURES

Frame :	Zinc plated steel, mechanically welded, Steel, mechanically welded
Mounting profiles :	Adjustable in depth (zinc plated)
Front door :	Metal solid door (RAL 9010 white) with Ventilation, can be opened up to 90°, locked by using key lock (N°333)
Cable entries :	Cables entries on each sides (brush and blanking panels included)
Installation :	In place of a suspended ceiling tile, suspended from the building's structure (4 attachment points provided)
Outside dimensions (D x W x H) mm :	595 x 595 x 315 mm
Useful Depth :	300
Capacity :	4
Load capacity :	20
Earthing kit included :	Yes

ARTICLE FEATURES

Load Capacity (kg) :	20
Capacity (U) :	4
Cylinder :	Gas cylinders
Door type :	Metal solid door (RAL 9010 - pure white) with ventilation, can be opened up to 90°, locked by using key lock (N°333)
19" mounting profiles :	Adjustable in depth (galvanized steel)
Effective depth (mm) :	300

RÉFÉRENCE

DESCRIPTION

GGM CBOX

19" Cabling ceiling mount cabinet CEILING BOX 4U - White