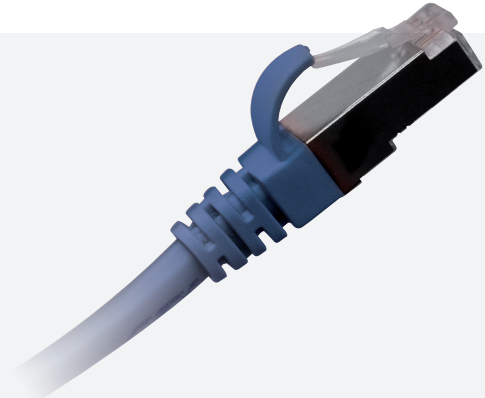




CATEGORY 5E F/UTP LSZH CORD

GGM CAT5EB2MZHB

Patch cord CAT5e
F/UTP LSZH
2 m
blue



The category 5 cords in the **GIGAMEDIA** range are dedicated to high speed, high performance applications, up to Gigabit Ethernet. Recommended for connecting workstations or patch cords in repeaters, in screened or unshielded installations. Essential component for the installed link, they have a guaranteed quality level ensured by an individual test. Thanks to a rigorous selection of the components and our volume of purchases, we can offer top of the range cords at competitive prices.

FEATURES

Shield type :	F/UTP
Category :	5E
Length :	2 m
Connector A :	RJ45 8(8)
Connector B :	RJ45 8(8)
Jacket colour :	Blue
Boot :	Moulded-on
Snagless :	Yes
Boot colour :	Blue
Fire retardant :	No
Zero halogen :	Yes
Oil resistant :	No
Number of pairs :	1x4
AWG :	26
Wire scheme :	Straight
NVP :	67 %

PART NUMBER

DESCRIPTION

GGM CAT5EB2MZHB	Patch cords CAT5e F/UTP LSZH 2 m blue
------------------------	---------------------------------------