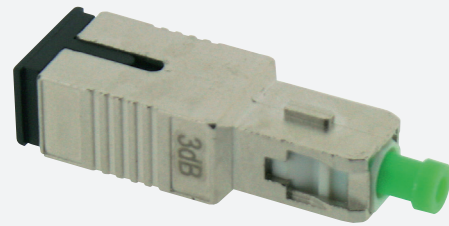




ATTENUATOR

GGM ATTSCA5DB



*Male/Femelle singlemode SC/APC
5 dB fixed attenuator*

Fixed optical attenuators allow the optical signal power to be reduced when this is not suitable for the sensitivity range of the active equipment. It is easy to integrate them between a connector and a socket (or active element port).

FEATURES

Accuracy :	+/- 0.5db
Sleeve :	Ceramic
Operating temperature :	From - 40°C to + 80°C
Other connectors & performances :	On demand
Color :	Green
Fixed attenuator :	SC/APC singlemode (1310/1550 nm)
Attenuation :	5 db
Return loss (dB) :	65
Adapted type of fibre :	Single mode
Connector A :	Other
Connector B :	Other
Housing material :	Metal
Sleeve material :	Ceramics
Connection method :	Engage (snap)
Colour :	Green

PART NUMBER	DESCRIPTION
GGM ATTSCA5DB	Male/Femelle singlemode SC/APC 5 dB fixed attenuator