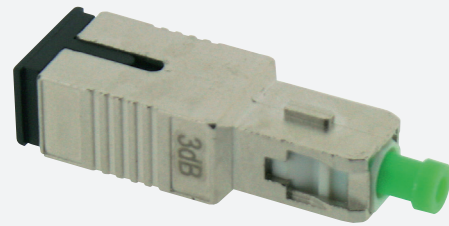




## ATTENUATOR

### GGM ATTSCA3DB



*Male/Femelle singlemode SC/APC  
3 dB fixed attenuator*

Fixed optical attenuators allow the optical signal power to be reduced when this is not suitable for the sensitivity range of the active equipment. It is easy to integrate them between a connector and a socket (or active element port).

#### FEATURES

<b>Accuracy :</b>	+/- 0.5db
<b>Sleeve :</b>	Ceramic
<b>Operating temperature :</b>	From - 40°C to + 80°C
<b>Other connectors &amp; performances :</b>	On demand
<b>Color :</b>	Green
<b>Fixed attenuator :</b>	SC/APC singlemode (1310/1550 nm)
<b>Attenuation :</b>	3 db
<b>Return loss (dB) :</b>	65
<b>Adapted type of fibre :</b>	Single mode
<b>Connector A :</b>	Other
<b>Connector B :</b>	Other
<b>Housing material :</b>	Metal
<b>Sleeve material :</b>	Ceramics
<b>Connection method :</b>	Engage (snap)
<b>Colour :</b>	Green

PART NUMBER	DESCRIPTION
<b>GGM ATTSCA3DB</b>	Male/Femelle singlemode SC/APC 3 dB fixed attenuator