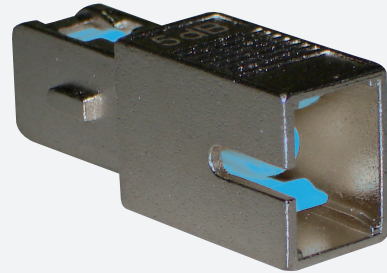




ATTENUATOR

GGM ATTSC3DB



*Male/Femelle singlemode SC
3 dB fixed attenuator*

Fixed optical attenuators allow the optical signal power to be reduced when this is not suitable for the sensitivity range of the active equipment. It is easy to integrate them between a connector and a socket (or active element port).

FEATURES

Accuracy :	+/- 0.5db
Sleeve :	Ceramic
Operating temperature :	From - 40°C to + 80°C
Other connectors & performances :	On demand
Color :	Blue
Fixed attenuator :	SC singlemode (1310/1550 nm)
Attenuation :	3 db
Return loss (dB) :	55
Adapted type of fibre :	Single mode
Connector A :	SC
Connector B :	SC
Housing material :	Metal
Sleeve material :	Ceramics
Connection method :	Engage (snap)
Colour :	Blue

PART NUMBER

DESCRIPTION

GGM ATTSC3DB

Male/Femelle singlemode SC 3 dB fixed attenuator