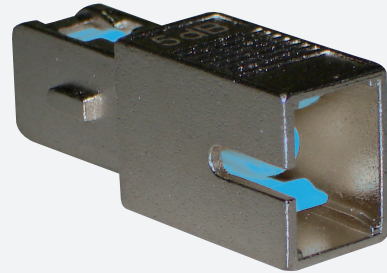




ATTENUATOR

GGM ATTLC10DB



*Male/Femelle singlemode LC
10 dB fixed attenuator*

Fixed optical attenuators allow the optical signal power to be reduced when this is not suitable for the sensitivity range of the active equipment. It is easy to integrate them between a connector and a socket (or active element port).

FEATURES

| | |
|--|------------------------------|
| Accuracy : | +/- 0.5db |
| Sleeve : | Ceramic |
| Operating temperature : | From - 40°C to + 80°C |
| Other connectors & performances : | On demand |
| Color : | Blue |
| Fixed attenuator : | LC singlemode (1310/1550 nm) |
| Attenuation : | 10 db |
| Return loss (dB) : | 55 |
| Adapted type of fibre : | Single mode |
| Connector A : | LC |
| Connector B : | LC |
| Housing material : | Metal |
| Sleeve material : | Ceramics |
| Connection method : | Engage (snap) |
| Colour : | Blue |

| PART NUMBER | DESCRIPTION |
|----------------------|---|
| GGM ATTLC10DB | Male/Femelle singlemode LC 10 dB fixed attenuator |