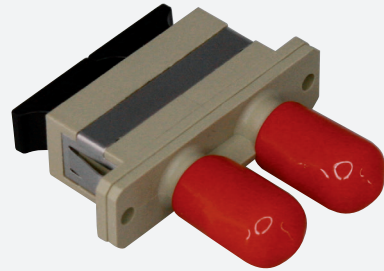




## MULTIMODE CONNECTOR

### GGM RACTCM2



*SC/ST duplex multimode adaptor*  
*Plastic body*  
*Grey colour*  
*Ceramic sleeve*

Fiber optic adapters (or bulkheads) allow two fibers equipped with connectors (pre-connectorized optical fibers, patchcords, etc...) to be connected to each other, via a ceramic sleeve.

This process ensures optimized insertion loss and reflectance at the point of contact.

#### FEATURES

<b>Sleeve :</b>	Phosphor bronze
<b>Connector format :</b>	ST/SC duplex
<b>Adapted type of fibre :</b>	Single mode
<b>Connector A :</b>	ST
<b>Connector B :</b>	SC
<b>Housing material :</b>	Plastic
<b>Sleeve material :</b>	Ceramics
<b>Connection method :</b>	Screw/snap in
<b>Colour :</b>	Beige

PART NUMBER	DESCRIPTION
<b>GGM RACTCM2</b>	SC/ST duplex multimode adaptor, plastic body, grey colour, ceramic sleeve