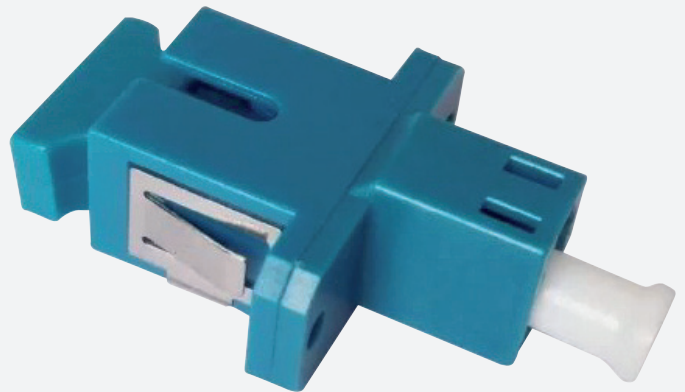




MONOMODE CONNECTOR

GGM RACSCCLCSM



SC/LC simplex singlemode adaptor
Plastic body
Blue colour
Ceramic sleeve

Fiber optic adapters (or bulkheads) allow two fibers equipped with connectors (pre-connectorized optical fibers, patchcords, etc...) to be connected to each other, via a ceramic sleeve.

This process ensures optimized insertion loss and reflectance at the point of contact.

FEATURES

Sleeve :	Ceramic
Connector format :	SC/LC simplex
Adapted type of fibre :	Single mode
Connector A :	SC
Connector B :	LC
Housing material :	Plastic
Sleeve material :	Ceramics
Connection method :	Screw/snap in
Colour :	Blue
UPC-Version :	Yes

PART NUMBER	DESCRIPTION
GGM RACSCCLCSM	SC/LC simplex singlemode adaptor, plastic body, blue colour, ceramic sleeve