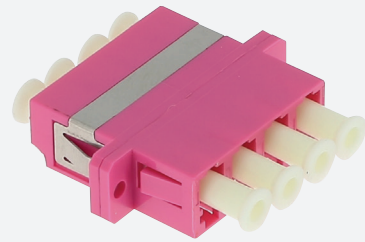
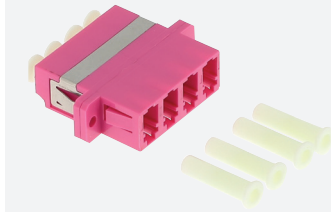




MULTIMODE CONNECTOR

GGM RACLCLCQV



Plastic body
Erika violet colour
Ceramic sleeve

Fiber optic adapters (or bulkheads) allow two fibers equipped with connectors (pre-connectorized optical fibers, patchcords, etc...) to be connected to each other, via a ceramic sleeve.

This process ensures optimized insertion loss and reflectance at the point of contact.

FEATURES

Connector format :	LC quad
Adapted type of fibre :	Multi mode
Connector A :	LC-Quad
Connector B :	LC-Quad
Housing material :	Plastic
Sleeve material :	Ceramics
Connection method :	Engage (snap)
Colour :	Violet (lilas)
UPC-Version :	No

PART NUMBER	DESCRIPTION
GGM RACLCLCQV	LC quad multimode adaptor, plastic body, erika violet colour, ceramic sleeve