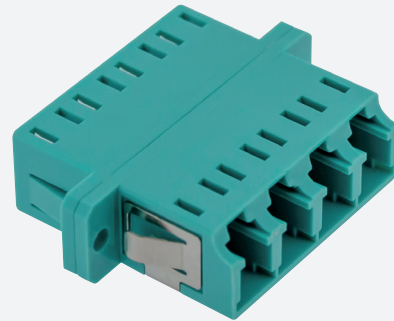
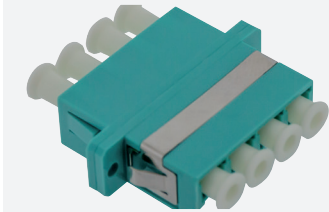




## MULTIMODE CONNECTOR

### GGM RACLCLCQA



Plastic body  
Aqua colour  
Ceramic sleeve

Fiber optic adapters (or bulkheads) allow two fibers equipped with connectors (pre-connectorized optical fibers, patchcords, etc...) to be connected to each other, via a ceramic sleeve.

This process ensures optimized insertion loss and reflectance at the point of contact.

#### FEATURES

|                                |               |
|--------------------------------|---------------|
| <b>Sleeve :</b>                | Ceramic       |
| <b>Connector format :</b>      | LC quad       |
| <b>Adapted type of fibre :</b> | Multi mode    |
| <b>Connector A :</b>           | LC            |
| <b>Connector B :</b>           | LC            |
| <b>Housing material :</b>      | Plastic       |
| <b>Sleeve material :</b>       | Ceramics      |
| <b>Connection method :</b>     | Screw/snap in |
| <b>Colour :</b>                | Turquoise     |

| PART NUMBER          | DESCRIPTION  |
|----------------------|--|
| <b>GGM RACLCLCQA</b> | LC quad multimode adaptor, plastic body, aqua colour, ceramic sleeve |