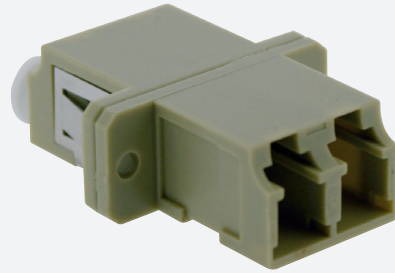




MULTIMODE CONNECTOR

GGM RACLCLCMM



LC duplex multimode adaptor
Plastic body
Grey colour
Ceramic sleeve

Fiber optic adapters (or bulkheads) allow two fibers equipped with connectors (pre-connectorized optical fibers, patchcords, etc...) to be connected to each other, via a ceramic sleeve.

This process ensures optimized insertion loss and reflectance at the point of contact.

FEATURES

Sleeve :	Ceramic
Connector format :	LC duplex
Adapted type of fibre :	Multi mode
Connector A :	LC
Connector B :	LC-Duplex
Housing material :	Plastic
Sleeve material :	Ceramics
Connection method :	Screw/snap in
Colour :	Beige

PART NUMBER	DESCRIPTION
GGM RACLCLCMM	LC duplex multimode adaptor, plastic body, grey colour, ceramic sleeve