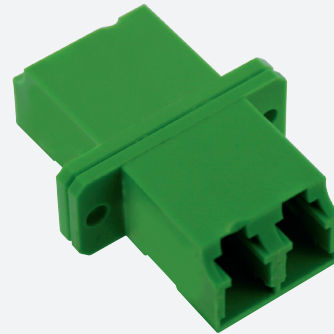




## MONOMODE CONNECTOR

### GGM RACLCAPCSM



*LC/APC duplex singlemode adaptor*  
*Plastic body*  
*Green colour*  
*Ceramic sleeve*

Fiber optic adapters (or bulkheads) allow two fibers equipped with connectors (pre-connectorized optical fibers, patchcords, etc...) to be connected to each other, via a ceramic sleeve.

This process ensures optimized insertion loss and reflectance at the point of contact.

#### FEATURES

<b>Sleeve :</b>	Ceramic
<b>Connector format :</b>	LC/APC duplex
<b>Adapted type of fibre :</b>	Single mode
<b>Connector A :</b>	LC-Duplex
<b>Connector B :</b>	LC-Duplex
<b>Housing material :</b>	Plastic
<b>Sleeve material :</b>	Ceramics
<b>Connection method :</b>	Screw/snap in
<b>Colour :</b>	Green

PART NUMBER	DESCRIPTION
<b>GGM RACLCAPCSM</b>	LC/APC duplex singlemode adaptor, plastic body, green colour, ceramic sleeve