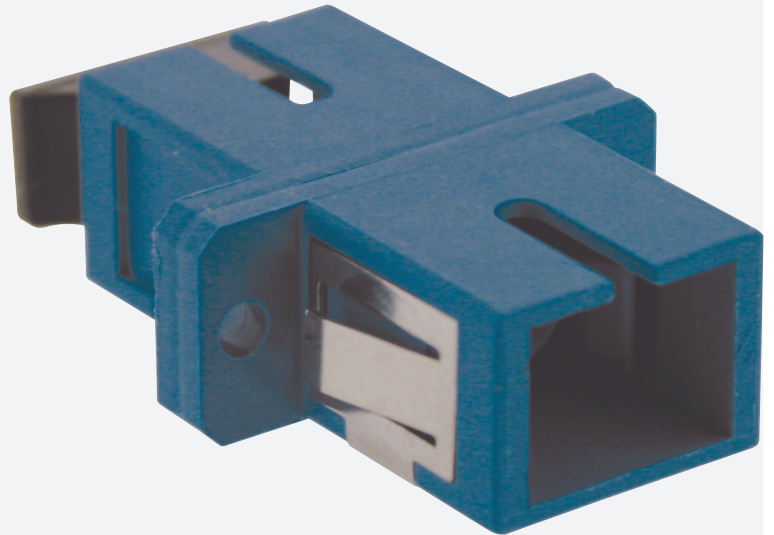




MULTIMODE CONNECTOR

GGM RACCCPFL



SC simplex multimode flangeless adaptor
Plastic
Grey colour
Ceramic sleeve

Fiber optic adapters (or bulkheads) allow two fibers equipped with connectors (pre-connectorized optical fibers, patchcords, etc...) to be connected to each other, via a ceramic sleeve.

This process ensures optimized insertion loss and reflectance at the point of contact.

FEATURES

Sleeve :	Ceramic
Connector format :	SC simplex
Adapted type of fibre :	Multi mode
Connector A :	SC
Connector B :	SC
Housing material :	Plastic
Sleeve material :	Metal
Connection method :	Engage (snap)
Colour :	Beige

PART NUMBER	DESCRIPTION
GGM RACCCPFL	SC simplex multimode flangeless adaptor, plastic, grey colour, ceramic sleeve