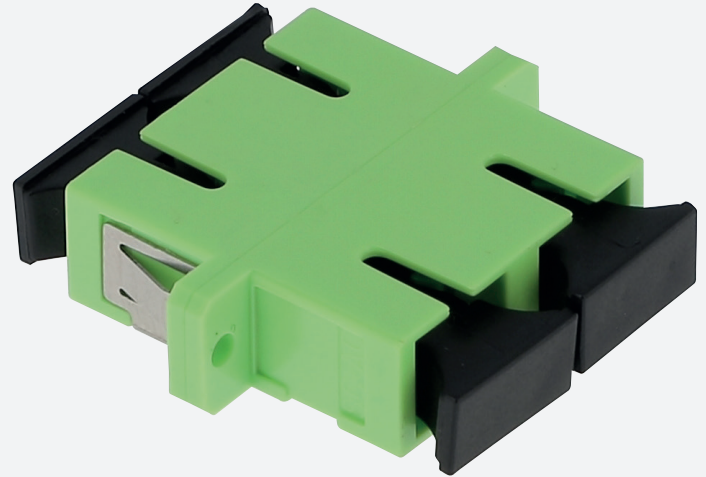
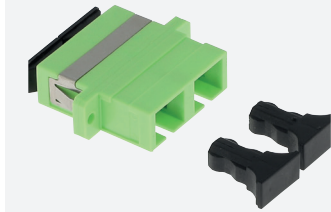




MULTIMODE CONNECTOR

GGM RACCCP2G



SC duplex multimode adaptor
Plastic body
Lime green colour
Ceramic sleeve

Fiber optic adapters (or bulkheads) allow two fibers equipped with connectors (pre-connectorized optical fibers, patchcords, etc...) to be connected to each other, via a ceramic sleeve.

This process ensures optimized insertion loss and reflectance at the point of contact.

FEATURES

Connector format :	SC duplex
Adapted type of fibre :	Multi mode
Connector A :	Other
Connector B :	SC duplex
Housing material :	Plastic
Sleeve material :	Ceramics
Connection method :	Screw/snap in
Colour :	Green
UPC-Version :	No

PART NUMBER	DESCRIPTION
GGM RACCCP2G	SC duplex multimode adaptor, plastic body, lime green colour, ceramic sleeve