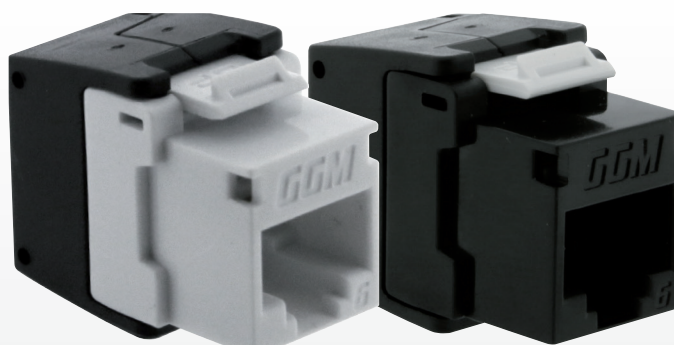
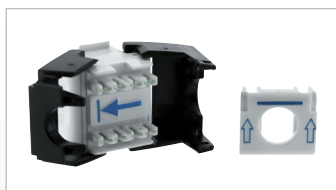


NEW KEYSTONE JACK CAT6 4PPoE



KEY POINTS

- Compact keystone (28 mm depth)
- No specific tool required
- 05U 24-port patch panel bundle available
- 8 wires insertion in one process
- Removable dust cover
- Component CAT6 certificate
- 4PPoE certified



GIGAMEDIA is launching its new reduced size, low profile Cat6 UTP toolless keystone Jack, only 28 mm depth ! Still using rear wings butterfly type with colored plastic cap to ensure fast and secured contact during the mounting process.

Improved rear IDC termination point and reduced cable management plastic cap for efficient high density environment.

Each NKJ is delivered with a removable front shutter, to be used on standard faceplate, panel (excepted 0.5U) to offer a shuttered solution.

MAIN FEATURES

- Flame Retardant plastic UL-94V-0
- RJ45 CAT6 UTP keystone type
- Wiring standard EIA/TIA 568 A & B
- No specific tool required

COMPLIANCE

- ANSI/TIA-568-C.2 Category 6
- IEC 60603-7-51 (+mesure PSANEXT, PSFEXT)
- ISO/IEC 11801 Amd 2: 2011
- EN 50173-2: 2007, A1: 2010
- IEC 60512-99-001:2012 (Ed. 1.0)

APPLICATIONS

- Ethernet: 10/100 Base TX
- Gigabit Ethernet 1 000 Base TX (802.3ab)
- ATM155 Mbit/s
- PoE, PoE+, 4PPoE

TECHNICAL FEATURES

ENVIRONMENTAL CONDITION

Temperature	Storage: -40 °C to +70°C Operating: -10 °C to +60°C
Relative humidity	Max. 93% (operating) Non condensing

ELECTRICAL

Electrical insulation resistance	500 MΩ min. @ 100V DC
Dielectric withstanding voltage	1000 V RMS @ 60 Hz while 1 mn
Spring wire contact resistance	20 mΩ max
IDC contact resistance	IDC: 2,5 mΩ max

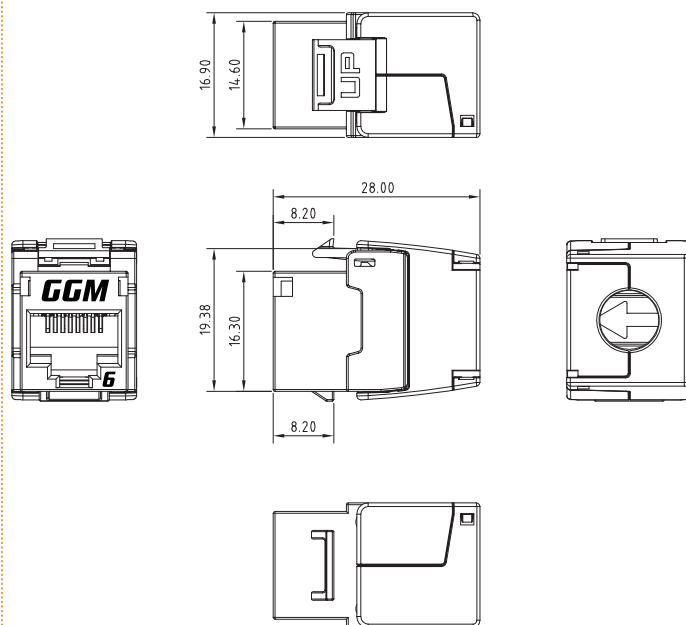
MECHANICAL

Retention	50 N while 60 s ±5 s
Insertion / Extraction life	750 cycles min.
IDC Wire Gauge	22 ~ 24 AWG

PHYSICAL

Housing	High-impact flame retardant plastic UL 94V-0
Spring wire	Phosphor bronze alloy plated with 50 μ of gold over 70 -100 μ of nickel
IDC	Phosphor bronze alloy with 100 μ 9:1 alloy Sn - Pb

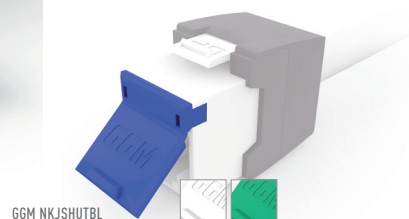
DIMENSIONS



GGM NKJU24PC605 + GGM NKJU48PC605



GGM NKJUC6TL24



GGM NKJSHUTBL

PART NUMBERS

P/N	DESCRIPTION
GGM NKJUC6TL	CAT6 4PPoE UTP toolless short jack, black
GGM NKJUC6TLW	CAT6 4PPoE UTP toolless short jack, white
GGM NKJUC6TL24	24x CAT6 4PPoE UTP toolless short jack, black
GGM NKJUC6TLW24	24x CAT6 4PPoE UTP toolless short jack, white
GGM NKJU24PC605	24 ports patch panel 0.5U + 24x keystone RJ45 CAT6 4PPoE UTP (ID #01 to 24)
GGM NKJU48PC605	24 ports patch panel 0.5U + 24x keystone RJ45 CAT6 4PPoE UTP (ID #25 to 48)
GGM NKJSHUTWH	Packs of 24 white shutters for NKJ*