

GGM IPAW215D

# USER MANUAL



Please follow the instructions in this manual to obtain the optimum results from this unit.  
We also recommend that you keep this manual handy for future reference.

<b>1. SAFETY PRECAUTIONS .....</b>	<b>3</b>
<b>2. APPLICATION .....</b>	<b>5</b>
<b>3. FEATURES .....</b>	<b>5</b>
<b>4. NOMENCLATURE AND FUNCTIONS .....</b>	<b>6</b>
4.1. FRONT PANEL .....	6
4.2. REMOTE CONTROL .....	6
4.3. SIDE PANEL .....	7
<b>5. OPERATION .....</b>	<b>8</b>
<b>6. WIRING DIAGRAM .....</b>	<b>11</b>
<b>7. BLOCK DIAGRAM .....</b>	<b>12</b>
<b>8. SPECIFICATIONS .....</b>	<b>13</b>
<b>9. INSTALLATION METHOD .....</b>	<b>14</b>

---

#### WEEE regulation



This product is covered by the WEEE II Directive (Directive 2012/19 / EU). It should not be thrown in the trash or dumped. Substances in the product may be hazardous to human health or the environment. Disposal may be done by returning the product to your dealer or leaving it a collection point provided for this purpose.

#### Battery directive



This product contains batteries. The logo indicates that they should not be thrown in the trash or landfill. Batteries may contain substances that may be hazardous to human health and the environment and heavy metals that have the following designations: Cd = Cadmium, Hg = Mercury, Pb = Lead. To facilitate the treatment and recycling of used batteries, you can return them to your dealer, deposit them in a collection bin provided for this purpose or return them to your municipal waste which is obliged to recover them.



This product bears the CE mark which certifies its conformity with the directives LVD 2014/35/EU ; EMC 2014/30/EU and RoHS 2011/65/EU. Compliance has been assessed in accordance with applicable standards in effect.

# 1. SAFETY PRECAUTIONS

- Be sure to read the instructions in this section carefully before use.
- Make sure to observe the instructions in this manual as the conventions of safety symbols and messages regarded as very important precautions are included.
- We also recommend you keep this instruction manual handy for future reference.

## Safety Symbol and Message Conventions

Safety symbols and messages described below are used in this manual to prevent bodily injury and property damage which could result from mishandling. Before operating your product, read this manual first and understand the safety symbols and messages so you are thoroughly aware of the potential safety.

### **WARNING**

Indicates a potentially hazardous situation which, if mishandled, could result in death or serious personal injury.

### **CAUTION**

Indicates a potentially hazardous situation which, if mishandled, could result in moderate or minor personal injury, and/or property damage.

### **WARNING**

#### When Installing the Unit

- Do not expose the unit to rain or an environment where it may be splashed by water or other liquids, as doing so may result in fire or electric shock.
- Use the unit only with the voltage specified on the unit. Using a voltage higher than that which is specified may result in fire or electric shock.
- Do not cut, kink, otherwise damage nor modify the power supply cord. In addition, avoid using the power cord in close proximity to heaters, and never place heavy objects -- including the unit itself -- on the power cord, as doing so may result in fire or electric shock.
- Be sure to replace the unit's terminal cover after connection completion. Because high voltage is applied to the speaker terminals, never touch these terminals to avoid electric shock.
- Be sure to ground to the safety ground (earth) terminal to avoid electric shock. Never ground to a gas pipe as a catastrophic disaster may result.
- Avoid installing or mounting the unit in unstable locations, such as on a rickety table or a slanted surface. Doing so may result in the unit falling down, causing personal injury and/or property damage.

#### When the Unit is in Use

- Should the following irregularity be found during use, immediately switch off the power, disconnect the power supply plug from the AC outlet and contact your nearest dealer. Make no further attempt to operate the unit in this condition as this may cause fire or electric shock.
  - If you detect smoke or a strange smell coming from the unit.
  - If water or any metallic object gets into the unit
  - If the unit falls, or the unit case breaks
  - If the power supply cord is damaged (exposure of the core, disconnection, etc.)
  - If it is malfunctioning (no tone sounds.)
- To prevent a fire or electric shock, never open nor remove the unit case as there are high voltage components inside the unit. Refer all servicing to your nearest dealer.
- Do not place cups, bowls, or other containers of liquid or metallic objects on top of the unit. If they accidentally spill into the unit, this may cause a fire or electric shock.
- Do not insert nor drop metallic objects or flammable materials in the ventilation slots of the unit's cover, as this may result in fire or electric shock.

## CAUTION

### When Installing the Unit

- Never plug in nor remove the power supply plug with wet hands, as doing so may cause electric shock.
- When unplugging the power supply cord, be sure to grasp the power supply plug; never pull on the cord itself. Operating the unit with a damaged power supply cord may cause a fire or electric shock.
- When moving the unit, be sure to remove its power supply cord from the wall outlet. Moving the unit with the power cord connected to the outlet may cause damage to the power cord, resulting in fire or electric shock. When removing the power cord, be sure to hold its plug to pull.
- Do not block the ventilation slots in the unit's cover. Doing so may cause heat to build up inside the unit and result in fire.
- Avoid installing the unit in humid or dusty locations, in locations exposed to the direct sunlight, near the heaters, or in locations generating sooty smoke or steam as doing otherwise may result in fire or electric shock.

### When the Unit is in Use

- Do not place heavy objects on the unit as this may cause it to fall or break which may result in personal injury and/or property damage. In addition, the object itself may fall off and cause injury and/or damage.
- Make sure that the volume control is set to minimum position before power is switched on. Loud noise produced at high volume when power is switched on can impair hearing.
- Do not operate the unit for an extended period of time with the sound distorting. This is an indication of a malfunction, which in turn can cause heat to generate and result in a fire.
- Contact your dealer as to the cleaning. If dust is allowed to accumulate in the unit over a long period of time, a fire or damage to the unit may result.
- If dust accumulates on the power supply plug or in the wall AC outlet, a fire may result. Clean it periodically. In addition, insert the plug in the wall outlet securely.
- Switch off the power, and unplug the power supply plug from the AC outlet for safety purposes when cleaning or leaving the unit unused for 10 days or more. Doing otherwise may cause a fire or electric shock.

An all-pole mains switch with a contact separation of at least 3 mm in each pole shall be incorporated in the electrical installation of the building.

## 2. APPLICATION

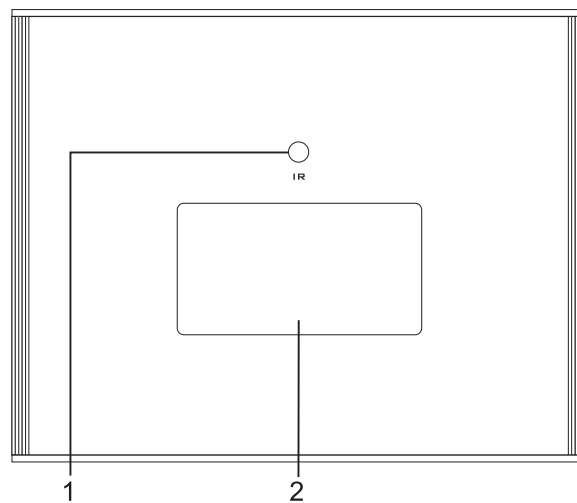
It is suitable for schools(deaf-mute school), office buildings, convention centers, alarm centers, railway stations and other lounge places. It adopts network digital transmission, to fulfill the functions, such as,pre-set BGM broadcasting, timed bell task, collecting audio, one-way calling.

## 3. FEATURES

01. Wall-mounted design, small size, aluminum alloy integrated structure design, exquisite beauty.
02. With 3.4 inches LCD screen and infrared remote control.
03. Adopts industrial-grade dual-core processing chip (ARM+DSP), to ensure start-up time less than 1 s.
04. Built in network IP decoding module, to achieve real-time broadcast network music and paging; network delay time for audio acquisition playback and paging is less than 30mS.
05. Built in play acquisition ondemand module, to achieve real-time play the audio from media library on demand.
06. Built-in 2×30W digital amplifier, with less heat but higher efficiency, and CD-level sound quality.
07. One MIC input, one line input,one line output, suitable for local public address broadcast.
08. Priority functions:
  - 1) Network alarm is the highest priority.
  - 2) Local MIC and AUX are the same level,higer priority than network background music.
09. Compatible to routers, switches, bridges gateways, Modem, Internet, 2G, 3G, 4G, multicast, unicast and other arbitrary network structures.
10. Support long-distance assistance for terminal upgrading from the sytem control center, to reduce the maintenance work burden.
11. Two short-circuit output (red, green), to provide short-circuit switch signal, and short circuit signal is controlled by the light mode of IP software.

## 4. NOMENCLATURE AND FUNCTIONS

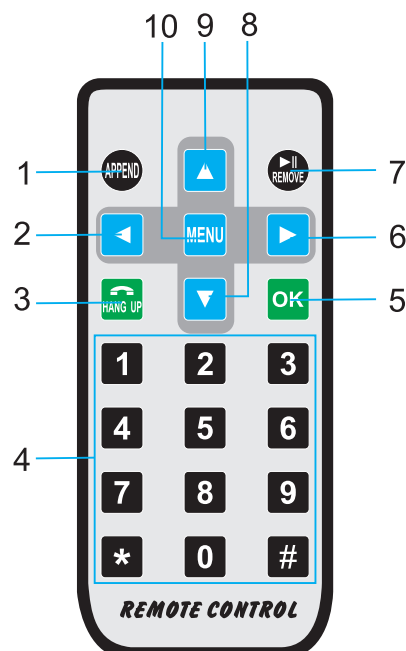
### 4.1. FRONT PANEL



01. Infrared receiver, remote control receiver port.

02. Display Screen, display all the current operating functions.

### 4.2. REMOTE CONTROL



01. Additional button

02. PREV / PREV button

03. Hang up button

04. Number button, \*, # button

05. Enter button

06. Next / Move next button

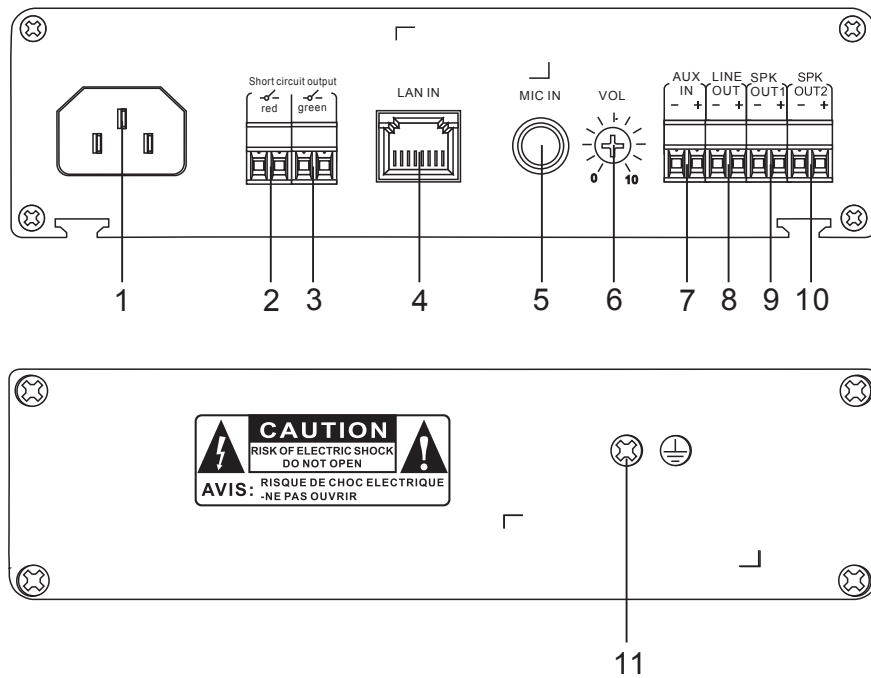
07. Cancel/pause/play button

08. Volume down button

09. Volume up button

10. Menu button.

### 4.3. SIDE PANEL



- 01. AC power input.
- 02. Red short circuit output, to provide short-circuit switch signal, and short circuit signal is controlled by the red light mode of IP software.
- 03. Green short circuit output, to provide short-circuit switch signal, and short circuit signal is controlled by the green light mode of IP software.
- 04. LAN and RJ45 interface, to connect PC host/ Ethernet /switch network.
- 05. MIC input port.
- 06. MIC and AUX Volume adjustment knob.
- 07. AUX input to connect CD-type audio equipment.
- 08. LINE OUT, external connection to local public address.
- 09. Speaker input port.
- 10. Speaker output port.
- 11. Grounding column.

## 5. OPERATION

Use a network cable to connect the port LAN IN of your equipment to a computer or network equipment. Open the software “IP network broadcast system” and make sure that the service has started. The next step is to open the software “iptool”. The window will open, you will have to press the button “Inquire” (Figure 1) to display the equipments found by “iptool” (Figure 2).

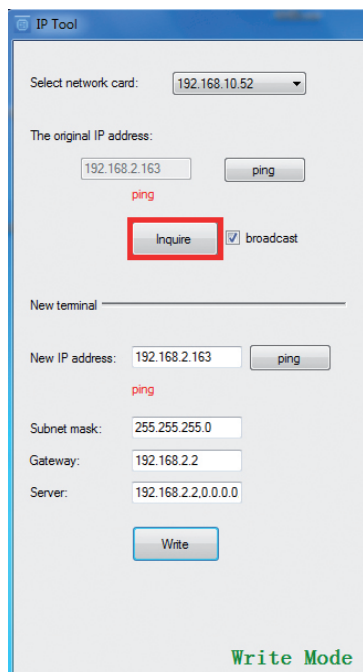


FIGURE 1

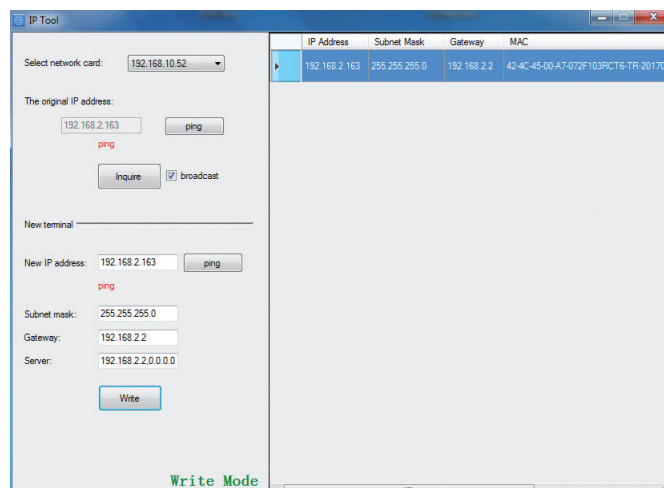


FIGURE 2

You will now have to change the IP address of your equipment to match the IP addresses of your network.

You need to fill every field below “New terminal” (Figure 3). Once all the fields are filled, press the button “Write” to apply the configuration and check with the button “Ping” to see if it is reachable (Figure 4). When all your equipments are configured, you can close the software “iptool”.

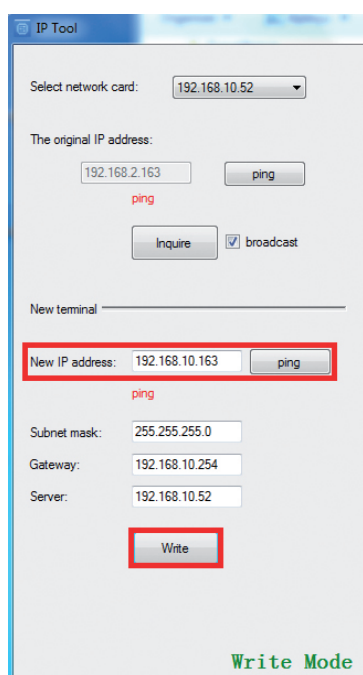


FIGURE 3

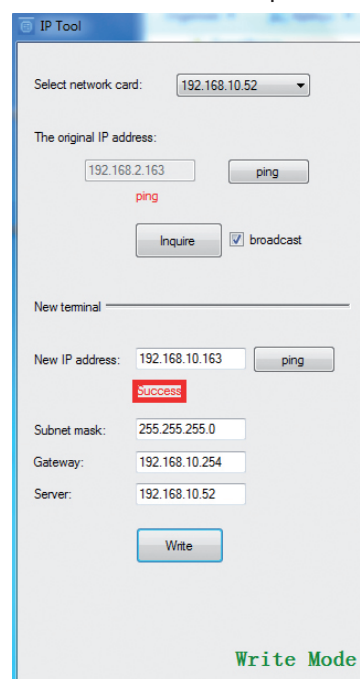
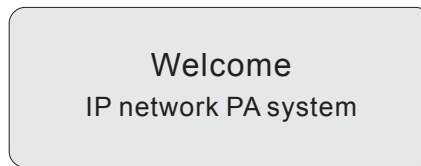


FIGURE 4

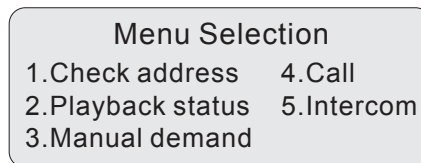


## The screen operation

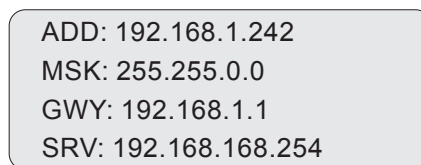
1) Power on, the screen shows as following picture:



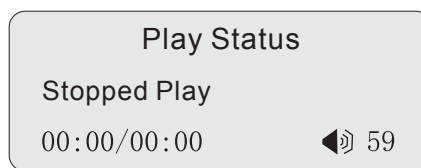
2) On standby mode, press «MENU», enter into the menu, the screen shows as following picture:



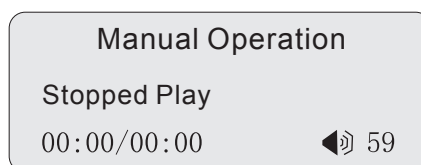
3) In the menu interface, press the number buttons on the panel of «1» to enter to view the IP address of the machine interface as follows:



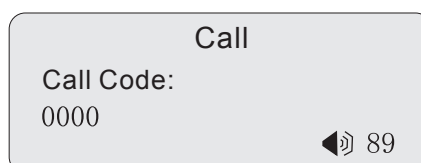
4) In the menu interface, click on the panel keypad «2», you can view the current state of play as follows:



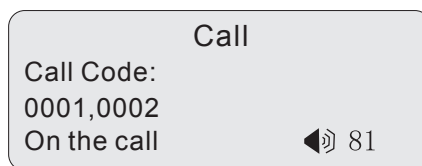
5) In the menu interface, click on the panel keypad «3», you can view the current state of play as follows:



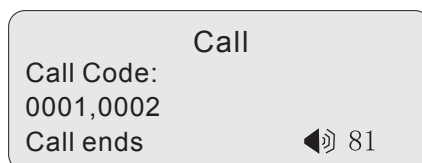
6) In the menu interface, click on the panel keypad «4», you can view the current state of play as follows:



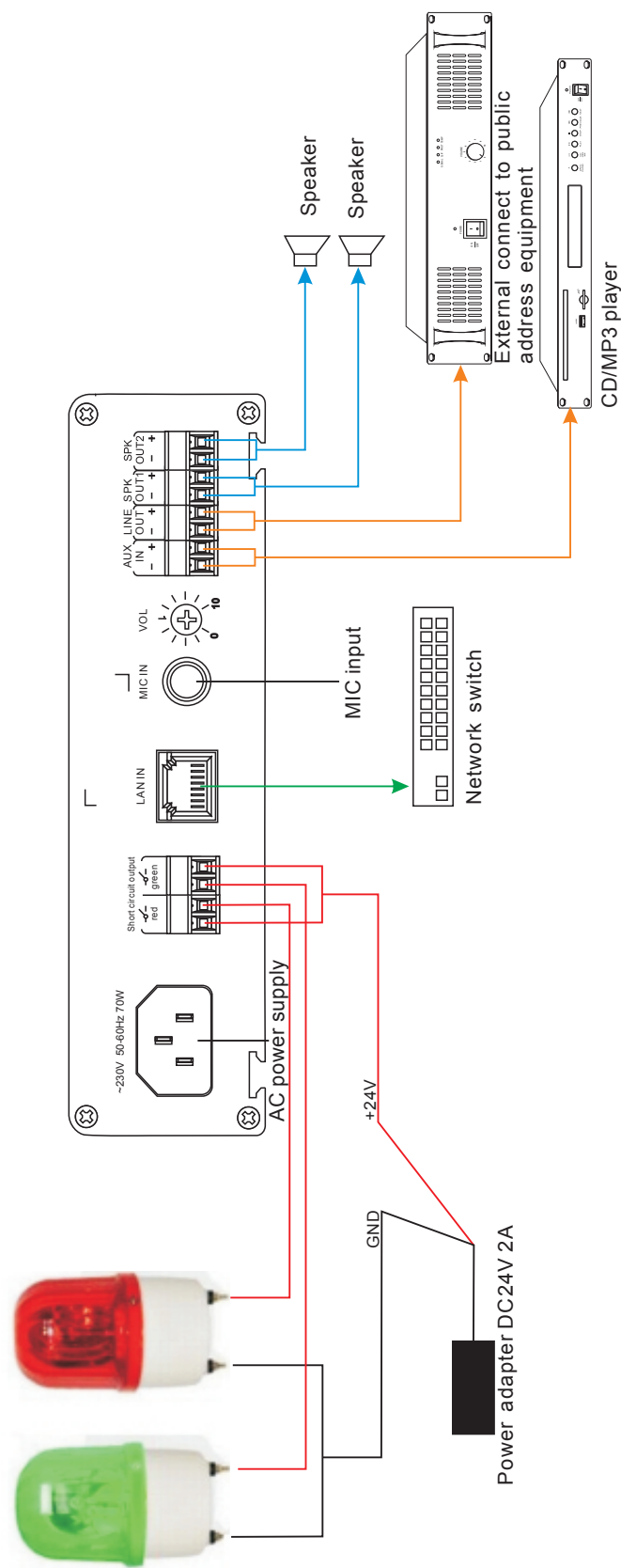
- 7) In the call mode, the input encoding to set a good call, press the «OK» button to confirm the call, you can achieve the call to other devices via «APPEND» button on the machine panel to increase the need to call apparatus for encoding, use the volume up / down keys to adjust the current size of the volume as follows:



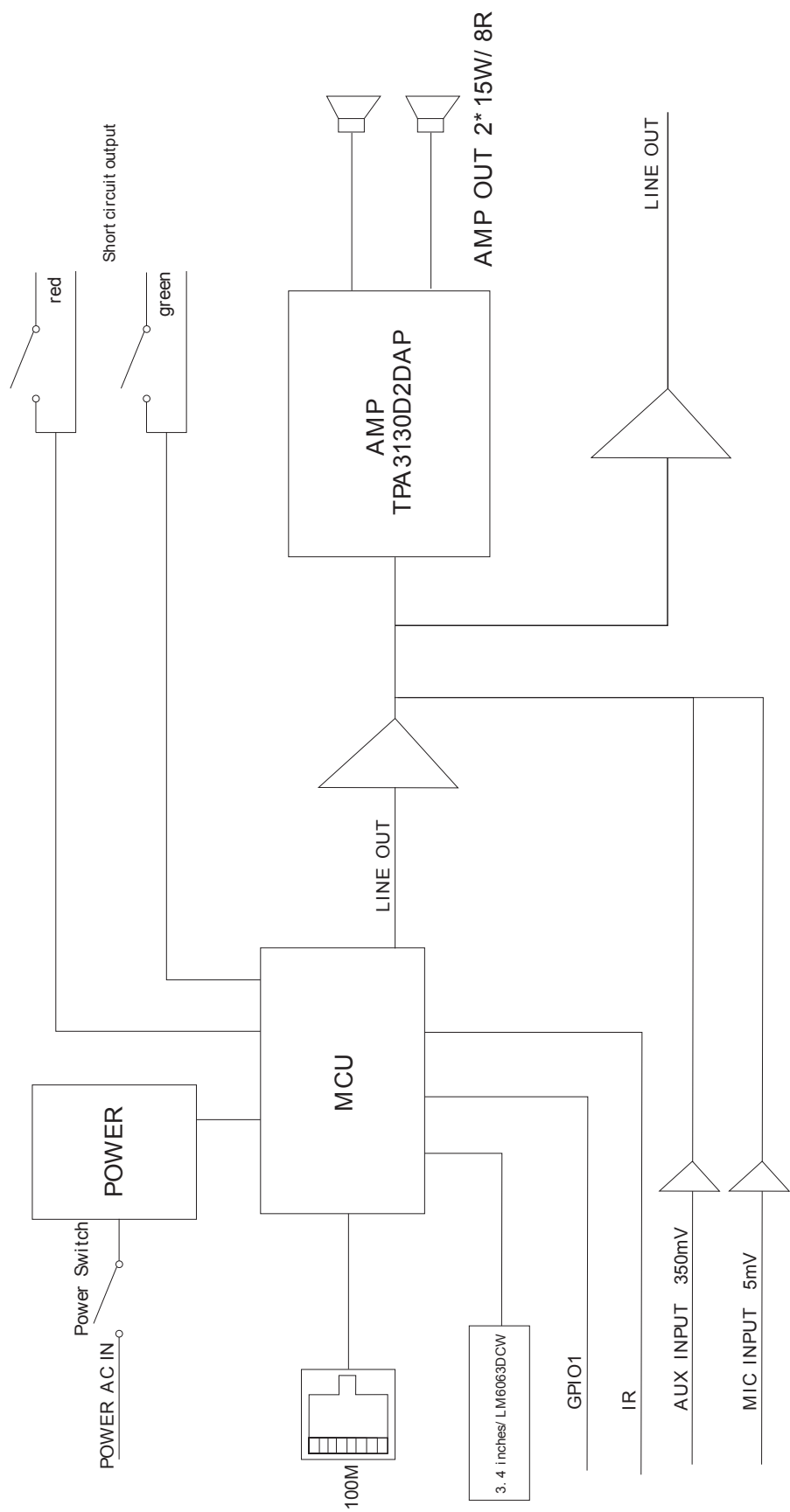
- 8) If the call encoding the current input is incorrect, through «REMOVE» button on the machine panel to withdraw the call. After the call is finished, press the «HANG UP» button to hang up the current call as follows:



6. WIRING DIAGRAM



7. BLOCK DIAGRAM



## 8. SPECIFICATIONS

Model	GGM IPAW215D
Network interface	Standard RJ45 input
Supportive protocol	TCP/IP, UDP, IGMP (Multicast)
Audio format	MP3
Audio mode	16 bit stereo CD tone quality
Sampling rate	8 k ~ 48 kHz
Transmission rate	100 Mbps
Display size	3.4 inch
Type LCD	128*64 dot-matrix display screen
Operating mode	Infrared remote control
Remote control distance	≥10 m, straight line, barrier-free
External speaker impedance and Rated Power	8 Ω, 2x15 W
THD	THD ≤ 1 %
Frequency response	80 Hz ~ 16 kHz (-3 dB, 0 dB)
SNR	≥ 65 dB
AUX IN input sensitivity	350 mV connector of industrial standard
MIC input sensitivity	5 mV
Operation temperature	5 °C ~ 40 °C
Operation humidity	20 % ~ 80 % relative humidity without moisture condensation
Power consumption	≤ 70 W
Operating voltage	~190-240 V / 50-60 Hz
Size	170 x 134 x 45 mm
Net weight	1 kg

# 9. INSTALLATION METHOD

