

# ***GIGAMEDIA***

## ***IP NETWORK PA SYSTEM***

- **GGM IPABW10**
- **NETWORK AUDIO ADAPTER**



## ***OWNER'S MANUAL***

Please follow the instructions in this manual to obtain the optimum results from this unit.  
We also recommend that you keep this manual handy for future reference.

## TABLE OF CONTENTS

1. SAFETY PRECAUTIONS.....	3
2. DESCRIPTION.....	5
3. FEATURES.....	5
4. NOMENCLATURE AND FUNCTIONS.....	6
5. TERMINAL CONFIGURATION OPERATING INSTRUCTIONS .....	7
6. WIRING DIAGRAM .....	10
7. BLOCK DIAGRAM.....	11
8. SPECIFICATIONS.....	12

# 1. SAFETY PRECAUTIONS

- Be sure to read the instructions in this section carefully before use.
- Make sure to observe the instructions in this manual as the conventions of safety symbols and messages regarded as very important precautions are included.
- We also recommend you keep this instruction manual handy for future reference.

## Safety Symbol and Message Conventions

Safety symbols and messages described below are used in this manual to prevent bodily injury and property damage which could result from mishandling. Before operating your product, read this manual first and understand the safety symbols and messages so you are thoroughly aware of the potential safety



### WARNING

Indicates a potentially hazardous situation which, if mishandled, could result in death or serious personal injury.



### CAUTION

Indicates a potentially hazardous situation which, if mishandled, could result in moderate or minor personal injury, and/or property damage.



## WARNING

### When Installing the Unit

- Do not expose the unit to rain or an environment where it may be splashed by water or other liquids, as doing so may result in fire or electric shock.
- Use the unit only with the voltage specified on the unit. Using a voltage higher than that which is specified may result in fire or electric shock.
- Do not cut, kink, otherwise damage nor modify the power supply cord. In addition, avoid using the power cord in close proximity to heaters, and never place heavy objects -- including the unit itself -- on the power cord, as doing so may result in fire or electric shock.
- Be sure to replace the unit's terminal cover after connection completion. Because high voltage is applied to the speaker terminals, never touch these terminals to avoid electric shock.
- Be sure to ground to the safety ground (earth) terminal to avoid electric shock. Never ground to a gas pipe as a catastrophic disaster may result.
- Avoid installing or mounting the unit in unstable locations, such as on a rickety table or a slanted surface. Doing so may result in the unit falling down, causing personal injury and/or property damage.

### When the Unit is in Use

- Should the following irregularity be found during use, immediately switch off the power, disconnect the power supply plug from the AC outlet and contact your nearest dealer. Make no further attempt to operate the unit in this condition as this may cause fire or electric shock.
  - If you detect smoke or a strange smell coming from the unit.
  - If water or any metallic object gets into the unit
  - If the unit falls, or the unit case breaks
  - If the power supply cord is damaged (exposure of the core, disconnection, etc.)
  - If it is malfunctioning (no tone sounds.)
- To prevent a fire or electric shock, never open nor remove the unit case as there are high voltage components inside the unit. Refer all servicing to your nearest dealer.
- Do not place cups, bowls, or other containers of liquid or metallic objects on top of the unit. If they accidentally spill into the unit, this may cause a fire or electric shock.
- Do not insert nor drop metallic objects or flammable materials in the ventilation slots of the unit's cover, as this may result in fire or electric shock.

### CAUTION

#### When Installing the Unit

- Never plug in nor remove the power supply plug with wet hands, as doing so may cause electric shock.
- When unplugging the power supply cord, be sure to grasp the power supply plug; never pull on the cord itself. Operating the unit with a damaged power supply cord may cause a fire or electric shock.
- When moving the unit, be sure to remove its power supply cord from the wall outlet. Moving the unit with the power cord connected to the outlet may cause damage to the power cord, resulting in fire or electric shock. When removing the power cord, be sure to hold its plug to pull.
- Do not block the ventilation slots in the unit's cover. Doing so may cause heat to build up inside the unit and result in fire.
- Avoid installing the unit in humid or dusty locations, in locations exposed to the direct sunlight, near the heaters, or in locations generating sooty smoke or steam as doing otherwise may result in fire or electric shock.

#### When the Unit is in Use

- Do not place heavy objects on the unit as this may cause it to fall or break which may result in personal injury and/or property damage. In addition, the object itself may fall off and cause injury and/or damage.
- Make sure that the volume control is set to minimum position before power is switched on. Loud noise produced at high volume when power is switched on can impair hearing.
- Do not operate the unit for an extended period of time with the sound distorting. This is an indication of a malfunction, which in turn can cause heat to generate and result in a fire.
- Contact your dealer as to the cleaning. If dust is allowed to accumulate in the unit over a long period of time, a fire or damage to the unit may result.
- If dust accumulates on the power supply plug or in the wall AC outlet, a fire may result. Clean it periodically. In addition, insert the plug in the wall outlet securely.
- Switch off the power, and unplug the power supply plug from the AC outlet for safety purposes when cleaning or leaving the unit unused for 10 days or more. Doing otherwise may cause a fire or electric shock.

An all-pole mains switch with a contact separation of at least 3 mm in each pole shall be incorporated in the electrical installation of the building.

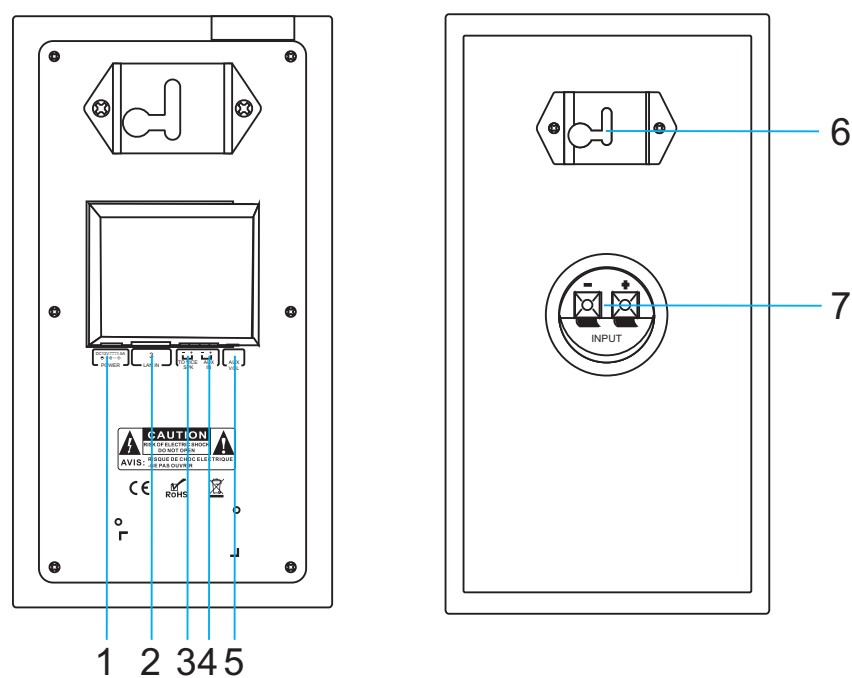
## 2. DESCRIPTION

It is widely applied in classroom, multi-media classroom, office, conference room, prison, hospital office, metro, and other places, to broadcast some recorded audio documents or background music.

## 3. FEATURES

1. Professional integration wall mounted design, integrated network decoding module, digital power amplifier and loudspeaker unit. The speaker case meet sound resonance principle design, with elegant and beautiful appearance.
2. Build-in one network hardware audio decoding module, it supports TCP/IP, UDP, IGMP(multicast protocol), to realize the network transfer audio signal of 16-bit CD quality.
3. Built in 2×10W power amplifier, one connected to the main speaker and the other to the sub-speaker. Good sound quality and strong power, with network volume setting.
4. With 1 AUX input, independent volume control, suitable for local sound reinforcement.
5. Compatible with any network structure such as router, switcher, bridge gateway, Modem, Internet, 2G, 3G, 4G, multicast and unicast.
6. Build-in 2 priority settings:
  - 1) Network BGM is same level as AUX, can mix broadcast.
  - 2) Network voice alarm is prior to AUX and Network BGM.
7. Digital products, Easy extension, no limit for geographical location, no need additional management equipment, share public network to avoid extra cabling for easy installation.

## 4. NOMENCLATURE AND FUCTIONS

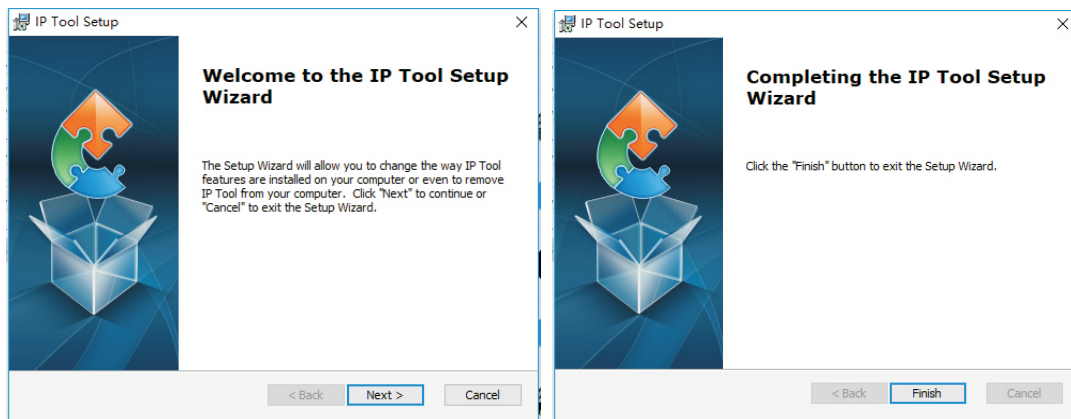


1. AUX potentiometer
2. Network cable to connect to the server port
3. TO VICE SPK - Sub-speaker output connection port
4. AUX input port
5. DC 12V power input interface
6. Hanging holes of box installation
7. Sub-speaker input connection port

## 5. TERMINAL CONFIGURATION OPERATING INSTRUCTIONS

The terminal needs to be configured before installation, before installation, need make a installation plan including terminal name, terminal IP address, gateway IP address, server IP address, location of terminal installation, and label the information on the terminal to ensure the convenient use of the device. Please save the plan as an electronic document for future maintenance. After the system planning is completed, please configure parameters of each terminal includes “terminal IP address, subnet mask, gateway and server address”.

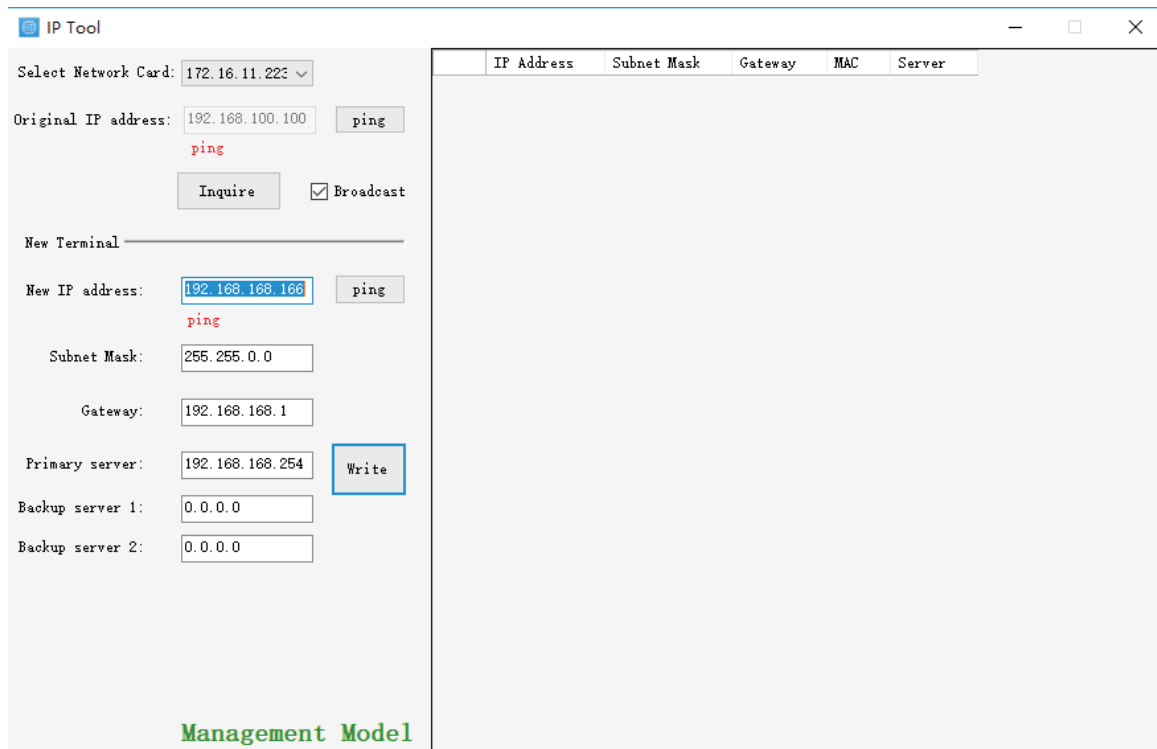
1. Installing software. Find the IP network broadcast system software installation package, double-click to open it, click on the program “terminal configuration tool”, after the installation of the program is completed, as shown below:



2. After the program is installed, a icon is generated on the desktop, as shown below:



3. Double-click the icon to run, and the “terminal configuration tool” window will pop up, as shown below:



## 5. TERMINAL CONFIGURATION OPERATING INSTRUCTIONS

The configuration steps:

Step 1: Connect the terminal and the computer installed with the terminal configuration tool program by the network wire, Plug in the power until the terminal power indicator is on.

Step 2: double-click to open the shortcut icon of “terminal configuration tool”, select the network card first, and left-click the “query” button in the window, to query the terminal’s original IP address. Please pay attention to: local IP address of the computer should be set in the same network segment as the terminal, because the default IP of terminal is : 192.168.168.166, so the computer’s local IP address should also be set to: 192.168.168.X, otherwise it maybe not match the IP terminal address.

Step 3: In the window of “Terminal Configuration Tool” , fill in correct “IP address”, “Subnet mask”, “Gateway IP” and “Server IP”, as below :

The screenshot shows the 'IP Tool' window. On the left, there are input fields for 'Original IP address' (172.16.11.20), 'New IP address' (172.16.11.20), 'Subnet Mask' (255.255.255.0), 'Gateway' (172.16.11.254), 'Primary server' (172.16.11.217), 'Backup server 1' (0.0.0.0), and 'Backup server 2' (0.0.0.0). There are buttons for 'ping', 'Inquire', 'Broadcast', and 'Write'. On the right, a table displays network information:

IP Address	Subnet Mask	Gateway	MAC	Server
172.16.11.20	255.255.255.0	172.16.11.254	42-4c-45-01-28-be0A-20180814-REV-1.18-EN	172.16.11.217

At the bottom left, it says 'Management Model'.

Step 4: left click on the “write” button, there will be a window prompt after the successful configuration; after that, left click on the “query” button, the parameters of the terminal will be re-read by the configuration program, if it display as the same as entered one, means that the configuration was successful.

This screenshot shows the same 'IP Tool' window as before, but with a small dialog box overlaid in the center. The dialog box has the title 'please choose!' and the message 'Configuration successful! Continue to configure the next terminal!'. It has 'Yes' and 'No' buttons.



## 5. TERMINAL CONFIGURATION OPERATING INSTRUCTIONS

Step 5: If multiple terminals are in the same network segment, you only need to modify the IP address of one terminal, it is needed to click on the terminal in the queried terminals list, then cancel the choice of broadcast on the left interface, modify the IP address and click for configuration.

The IP Tool Management Model interface consists of a left sidebar and a main table area.

**Left Sidebar:**

- Select Network Card: 172.16.11.188
- Original IP address: 172.16.11.20 (with a red 'ping' label)
- ☒ Broadcast
- New Terminal:
  - New IP address: 172.16.11.20 (with a red 'ping' label)
  - Subnet Mask: 255.255.255.0
  - Gateway: 172.16.11.254
  - Primary server: 172.16.11.217 (with a blue 'Write' button)
  - Backup server 1: 0.0.0.0
  - Backup server 2: 0.0.0.0

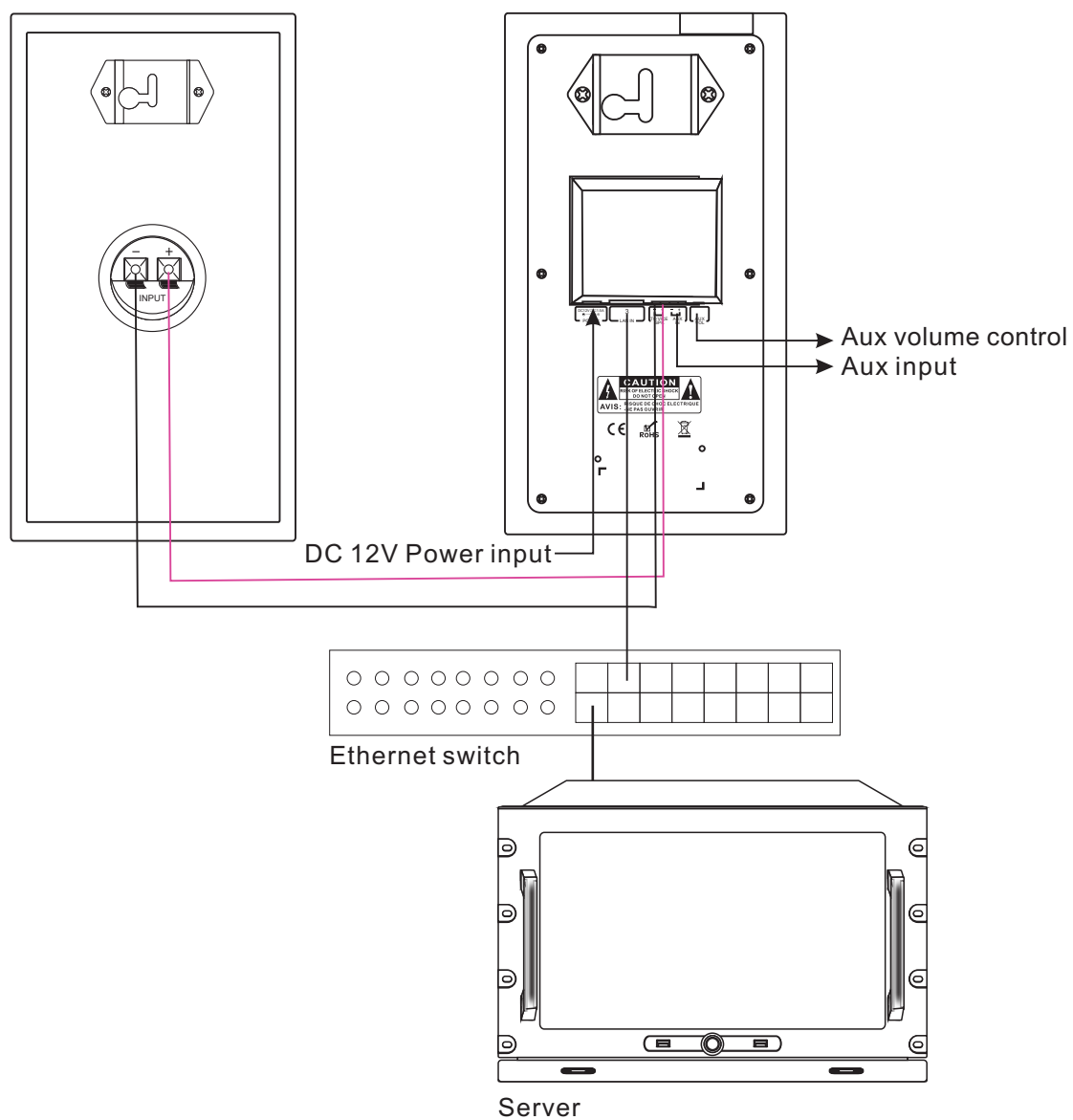
**Main Table:**

IP Address	Subnet Mask	Gateway	MAC	Server
172.16.11.20	255.255.255.0	172.16.11.254	42-4c-45-01-28-be0A-20180814-REV-1.18-EN	172.16.11.217
172.16.11.22	255.255.255.0	172.16.11.254	42-4C-45-00-4E-92F103RCT6-TR-20170225-REV-9.15-CN	172.16.11.228.0.0.0.0.0.0.0.0.0
172.16.11.31	255.255.255.0	172.16.11.254	42-4C-45-00-5D-10F103RCT6-TR-20170225-REV-9.15-CN	172.16.11.218.0.0.0.0.0.0.0.0.0
172.16.11.34	255.255.255.0	172.16.11.254	42-4C-45-00-51-4BF103RCT6-TR-20170225-REV-9.15-CN	172.16.11.218.0.0.0.0.0.0.0.0.0
172.16.11.37	255.255.255.0	172.16.11.254	42-4C-45-00-63-F02F103RCT6-20170606-REV-9.17-CN	172.16.11.228.0.0.0.0.0.0.0.0.0
172.16.11.38	255.255.255.0	172.16.11.254	42-4C-45-00-FF-002F103RCT6-20170606-REV-9.17-CN	172.16.11.214.0.0.0.0.0.0.0.0.0
172.16.11.45	255.255.255.0	172.16.11.254	42-4C-45-00-86-532F103RCT6-20170606-REV-9.17-CN	172.16.11.228.0.0.0.0.0.0.0.0.0
172.16.11.63	255.255.255.0	172.16.11.254	42-4C-45-00-17-15	172.16.11.228
172.16.11.66	255.255.255.0	172.16.11.254	42-4C-45-01-9F-902F103RCT6-20170606-REV-9.17-CN	172.16.11.218.0.0.0.0.0.0.0.0.0

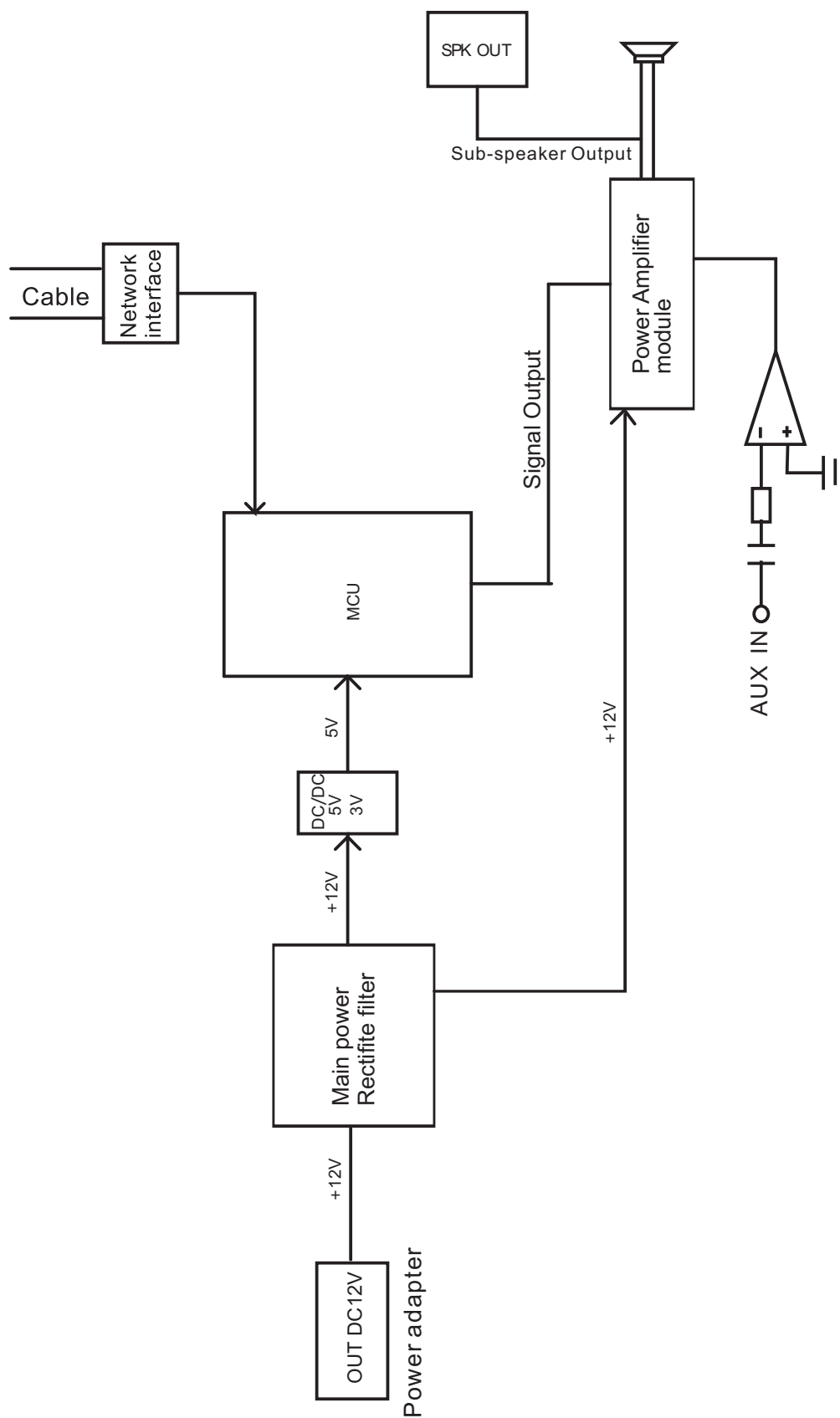
**Bottom Screenshot:** The same interface is shown, but with a 'please choose!' dialog box overlaid. The dialog box contains the text 'Configuration successfull. Continue to configure the next terminal!' and has 'Yes' and 'No' buttons. The 'New Terminal' section on the left now shows 'New IP address: 172.16.11.34'.

Notes: If the terminal data can't be queried or the network is blocked, the pop-up window will say Reconfigure the IP address or IP address writing error. In this case, please reconfigure the network, check the network cable, and turn off the firewall, etc.

## 6. WIRING DIAGRAM



## 7. BLOCK DIAGRAM



## 8. SPECIFICATIONS

Model	GGM IPABW10
Network Interface	Standard RJ45 input
Supportive protocol	TCP/IP, UDP, IGMP (Multicast)
Audio Format	Mp3
Sampling Rate	8K~48KHz
Transmission rate	100Mbps
Audio mode	16 bit stereo CD tone quality
Rated power	2x10W
THD	THD $\leq$ 1%
Frequency Response	150Hz~16KHz, +1dB/-3dB
SNR	>65dB
Operation temperature	5°C~40°C
Operation humidity	20%~80% relative humidity without moisture condensation
Overall power consumption	$\leq$ 50W
Operating voltage	~190-240V 50-60Hz(Power adapter); DC 12V
Dimensions	137x125x250mm
Net weight	3.6Kg

# IP NETWORK PA SYSTEM

VersionV0.1

***GIGAMED*A**