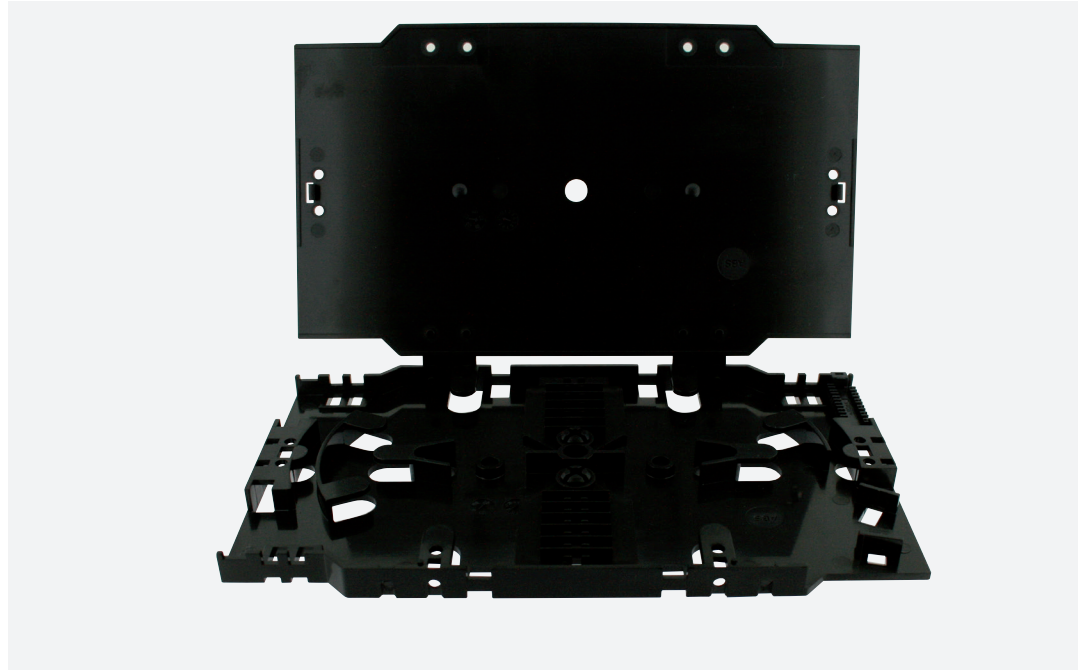




## FUSION FIBRE SPLICE TRAY GGM SPLICEKIT



This splice kit can accept up to 12 fusion splices.

It has various cable entries and allows a safe fibre bending.

### SPECIFICATIONS

- ▶ ABS plastic
- ▶ Capacity: 2x6 fusion splices
- ▶ Stackable (up to 4 trays on 1U)
- ▶ Screw fixation (Ø 6mm central hole, Ø 4mm 2x aside holes)
- ▶ Included: 1 x black lid, 2 x splice holders, 1 x strain relief comb, 4 x bukles
- ▶ Other splicing support on demand
- ▶ Black colour
- ▶ Operating temperature: -40°C to +60°C
- ▶ Dimensions: 155 x 92 x 10 mm (LxWxH)
- ▶ Weight: 0.06 kg

### REFERENCES

**GGM SPLICEKIT** Fusion fibre splice tray

### ACCESSORIES

<b>GGM PROTHERM60L</b>	100x 60 mm fusion splices
<b>GGM PROTHERM45L</b>	100x 45 mm fusion splices