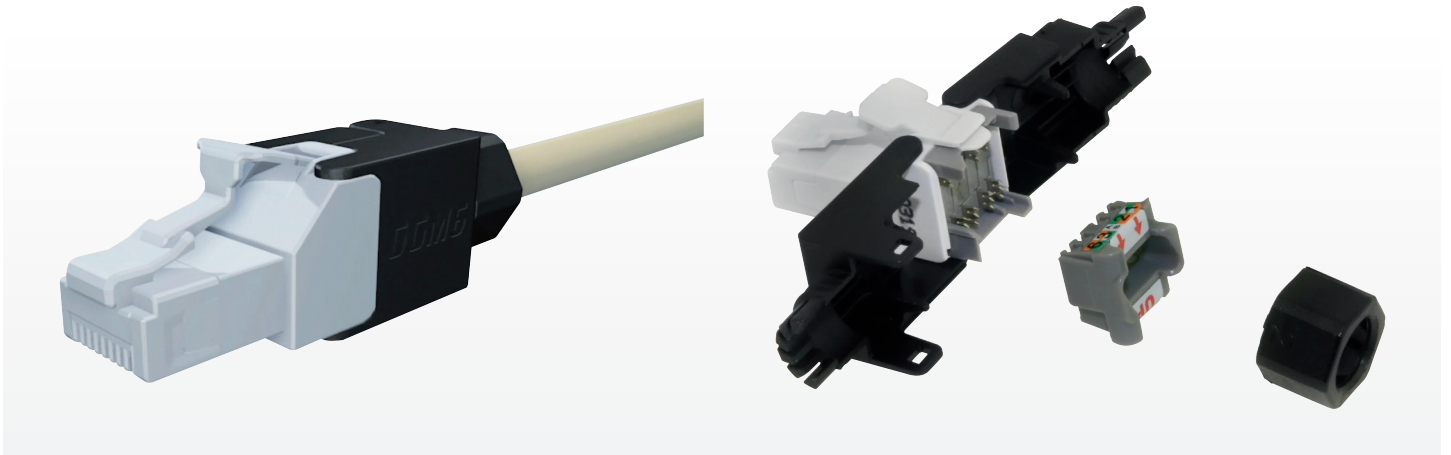


RJ45 PLUG C6 CLASS E
GGM NFPLUGITC6U



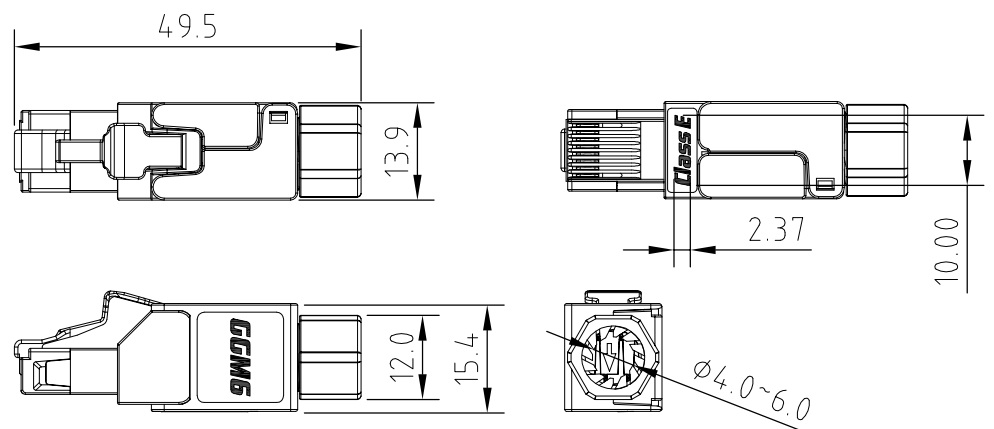
COMPATIBLE CABLES:

- GGM C5EU4PPVCxx
- GGM C5EU4PZHBxx
- GGM C5EU4PPExx
- GGM C6U4PZHxx
- GGM C6U4PFR0Hxx
- GGM C6U4PPExx

Universal RJ45 IP20 field terminable plug for solid cable cores (23/26AWG) with fast and reliable termination. GGM NFPLUGITC6U is compatible with ClassE performance according to ISO/IEC 11801 and supports applications up to 5Gbit Ethernet (IEEE 802.3bz).

MAIN FEATURES

- IP20 RJ45 plug, 3 parts
- Class E, up to 5Gbit Ethernet
- UTP
- Toolless
- AWG23/1 - AWG26/1
- Dim: check details below



P/N	DESCRIPTION
GGM NFPLUGITC6U	RJ45 field plug RJ45 IP20 5G Class E, UTP