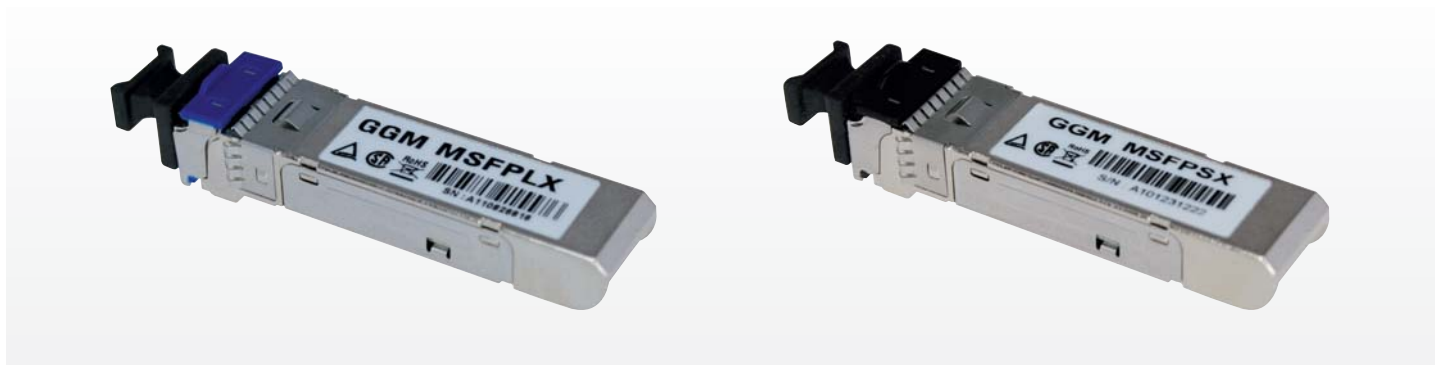


GGM MSFPLX & GGM MSFPSX MODULES



The GIGAMEDIA small form-factor pluggable (SFP) or Mini-GBIC is a hot-pluggable transceiver, compact used for data communications applications, supporting full duplex for Fast or Gigabit Ethernet speeds on multimode fiber or singlemode fiber for long distances. These modules are in "LC" connector, they interfaces a network device mother board (into a switch, media converter etc) to a fiber optic networking cable. This format is supported by many network component vendors.

MAIN FEATURES

- 1000Base-LX or 1000Base-SX
- 100Base-FX
- Duplex LC connector
- Full duplex operation
- 802.3x flow control support
- Power support: 3.3 V
- RoHS Compliant
- Hot pluggable
- Metal enclosure for lower EM

For information, that will be always the switch which will determine what kind of module (speeds) you have to use "100 Mbps or 1000 Mbps" You will find below the whole range of GIGAMEDIA "LC" Module available at Conectis.

SFP MODULES 100MBPS LC CONNECTOR

P/N	DESCRIPTION
GGM MSFPFX2*	SFP-FX-100 Mbps, Multimode, Wave Length: 1310 nm, 2 km, 3.3 V, LC
GGM MSFPFXSM*	SFP-FX-100 Mbps, Singlemode, Wave Length: 1310 nm, 40 km, 3.3 V, LC
GGM MSFPFX2CIS	SFP-FX-100 Mbps, Multimode, Wave Length: 1310 nm, 2 km, 3.3 V, LC, with Cisco coding
GGM MSFPFXSMCIS	SFP-FX-100 Mbps, Singlemode, Wave Length: 1310 nm, 40 km, 3.3 V, LC, with Cisco Coding

SFP MODULES 1000MBPS LC CONNECTOR

P/N	DESCRIPTION
GGM MSFPSX*	SFP-SX-1250 Mbps, Multimode, 850 nm, 550 m = 8.5 dB , 3.3 / 5 V, LC
GGM MSFPLX*	SFP-LX-1250 Mbps, Singlemode, 1310 nm, 10 km = 10.5 dB , 3.3 / 5 V, LC
GGM MSFPSXCISCO	SFP-SX-1250 Mbps, Multimode, 850 nm, 550 m = 8.5 dB , 3.3 / 5 V, LC with Cisco Coding
GGM MSFPLXCISCO	SFP-LX-1250 Mbps, Singlemode, 1310 nm, 10 km = 10.5 dB , 3.3 / 5 V, LC with Cisco Coding

These SFP modules could be used with these following brands : GIGAMEDIA / D-Link / Allied Telesis / Net Gear / 3 Com / Nortel / Aruba / HP