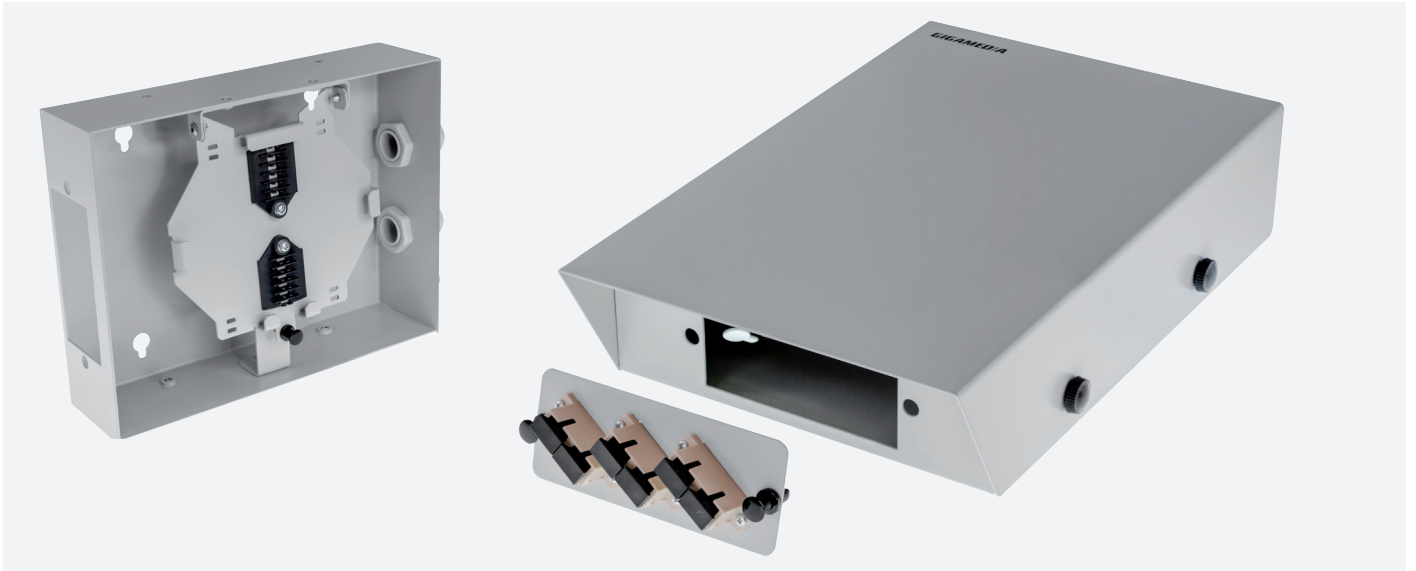




6-12F0 TERMINATION BOX

GGM BOXOPTICx



The BOXOPTIC terminal box is a cost-effective solution for installations up to 12 fibres (LC duplex). It is designed to integrate most connectors on the market thanks to specific modular plates.

This fibre optic box is intended for an indoor environment and can be mounted directly on a wall or inside an enclosure.

Two versions are available:

- ▶ one with a fusion splice tray + mounting twist ties (GGM BOXOPTIC2)
- ▶ one with mounting twist ties (GGM BOXOPTIC)

FEATURES

- ▶ Up to 12 fibres (LC duplex)
- ▶ Cold rolled steel
- ▶ Colour: white (RAL7035)
- ▶ IP20 protection
- ▶ 2 x rear cable entries

	GGM BOXOPTIC2	GGM BOXOPTIC
Dimensions	55 mm (h) x 160 mm (l) x 250 mm (d)	55 mm (h) x 160 mm (l) x 250 mm (d)
Weight	1.37 kg	1.35 kg
Accessories included	Fusion splice tray, 3 x twist ties, 2 x PG13,5 glands	3 x twist ties


PART NUMBERS

P/N	DESCRIPTION
GGM BOXOPTIC	6-12FO termination box
GGM BOXOPTIC2	6-12FO termination box + fusion splice tray
GGM PAG6T	Empty module for 6 ST simplex adapters – grey
GGM PAG6C	Empty module for 6 SC simplex / LC duplex adapters – grey
GGM PAG3CD	Empty module for 3 SC duplex / LC quad adapters – grey
GGM PAG4CD	Empty module for 4 SC duplex / LC quad adapters – grey
GGM PA0BG	Obturingating plate - grey

ADAPTERS

P/N	DESCRIPTION
GGM RACCCP	Plastic SC simplex multimode adapter - grey
GGM RACCCP2	Plastic SC duplex multimode adapter - grey
GGM RACCCP2AQUA	Plastic SC duplex multimode adapter - aqua
GGM RACM0CCS	Plastic SC simplex singlemode adapter - blue
GGM RACCCP2SC	Plastic SC duplex singlemode adapter - blue
GGM RACLCLCMM	Plastic LC duplex multimode adapter - grey
GGM RACLCLCAQUA	Plastic LC duplex multimode adapter - aqua
GGM RACLCLCSM	Plastic LC duplex singlemode adapter - blue
GGM RACTTM	Metal ST simplex multimode adapter
GGM RACTTMD	Metal ST duplex multimode adapter
GGM RACM0TTS	Metal ST simplex singlemode adapter
GGM RACM0TTD	Metal ST duplex singlemode adapter

ACCESSORIES


P/N	DESCRIPTION
GGM SUPPORTEP	12 FO fusion splice management
GGM PROTHERM60L	100 x 60 mm heat shrinkable tube
GGM PROTHERM45L	100 x 45 mm heat shrinkable tube