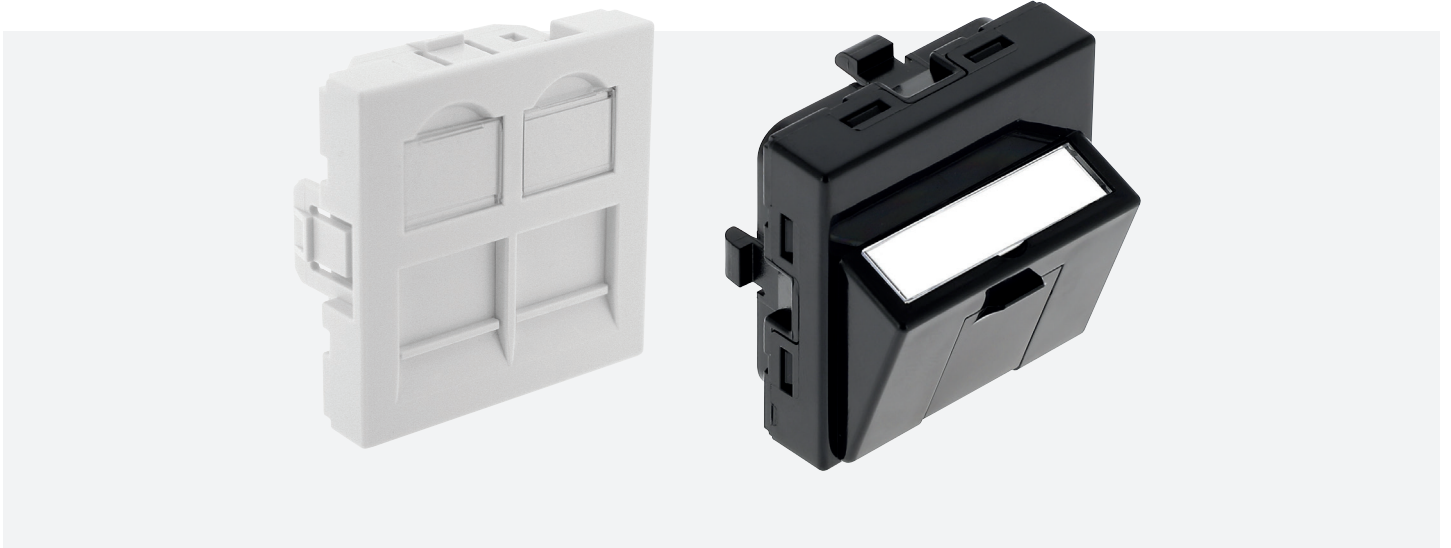




## FACEPLATE

### GGM PL45xx



Also available in 22.5 x 45 mm  
straight version  
(GGM PL225D)



Angled and straight faceplates available in 1 or 2 port versions.

To be used with all our GIGAMEDIA Keystone connectors, shielded or not.

Angled faceplate allow an angled patch cord exit to prevent damage and help maintain the bending radius of cables.

Faceplates also feature designed labeling windows for identification purpose.

#### SPECIFICATIONS

- ▶ To be used with GIGAMEDIA keystone jacks
- ▶ Dimensions: 45 x 45 mm or 22.5 x 45 mm
- ▶ Mosaic™ compatible
- ▶ 4 fixing wings
- ▶ Colour: pure white (RAL9010)  
or black (RAL9005)
- ▶ Faceplate with dust cover
- ▶ Labeling window for identification
- ▶ Angled version: 20°
- ▶ Depth: - straight version: 25 mm  
- angled version: 20 mm
- ▶ UL94V-0 fire retardant

P/N	DESCRIPTION
<b>GGM PL45DS</b>	Empty 45*45 single port faceplate, white
<b>GGM PL45DD</b>	Empty 45*45 dual port faceplate, white
<b>GGM PL45IS</b>	Empty 45*45 single port angled faceplate, white
<b>GGM PL45ID</b>	Empty 45*45 dual port angled faceplate, white
<b>GGM PL45DSN</b>	Empty 45*45 single port faceplate, black
<b>GGM PL45DDN</b>	Empty 45*45 dual port faceplate, black
<b>GGM PL45ISN</b>	Empty 45*45 single port angled faceplate, black
<b>GGM PL45IDN</b>	Empty 45*45 dual port angled faceplate, black
<b>GGM PL225D</b>	Empty 22.5*45 single port faceplate, white (pack of 4 pcs)