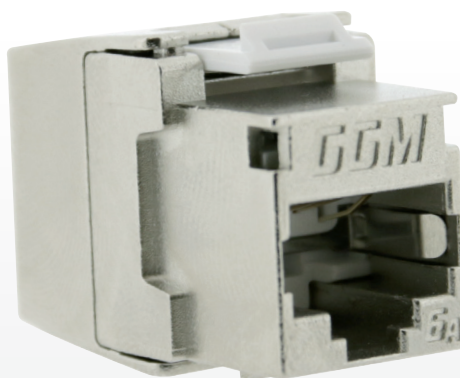


NEW CAT6A JACK 10G 4PPoE



KEY POINTS

- Compact keystone (28 mm depth)
- No specific tool required
- 05U 24-port patch panel bundle available
- 8 wires insertion in one process
- 360° shield continuity
- Removable dust cover
- Component CAT6A certificate
- 4 PPoE certified



Category 6A 10G Screened Jacks are designed for a high level of performance and meet all requirement performance.

Due to special Pin design, we are offering one of the most efficient keystone. The connectors contact design also provides enhanced plug-to-jack connection integrity providing the highest level of reliability.

Jacks are fully shielded to optimize protection from EMI including Alien Crosstalk and has been specifically engineered with enhanced cable and connector performance designed to support the latest 10 Gb/s Ethernet requirements.

Like all our keystones, it passes successfully all compliance tests, Cat6A component level and 4PPoE compliance approved by 3rd party testing.

By using our CAT6A Shielded solid cable, it will exceed EN/ISO standards and keep offering a comfortable and easy mounting process.

Compatible with most of our accessories to match any jobs configuration.

Each NKJ is delivered with a removable front shutter, to be used on standard faceplate, panel (excepted 0.5U) to offer a shuttered solution.

MAIN FEATURES

- Zinc – alloy fully shielded body
- Shielded RJ45 CAT6A keystone type
- Wiring standard EIA/TIA 568 A & B
- No specific tool required

COMPLIANCE

- ANSI/TIA-568-C.2 Category 6A
- IEC 60603-7-51 (+mesure PSANEXT, PSAFEXT)
- ISO/IEC 11801 Amd 2: 2011
- EN 50173-2: 2007, A1: 2010
- IEC 60512-99-001:2012 (Ed. 1.0)

APPLICATIONS

- Ethernet: 10/100 Base TX
- Gigabit Ethernet 1 000 Base TX (802.3ab)
- IEEE 10G Base-T (802.3an)
- ATM155 Mbit/s
- PoE, PoE+, 4PPoE

TECHNICAL FEATURES

ENVIRONMENTAL CONDITION

Temperature	Storage: -40 °C to +70°C Operating: -10 °C to +60°C
Relative humidity	Max. 93% (operating) Non condensing

ELECTRICAL

Electrical insulation resistance	500 MΩ min. @ 100V DC
Dielectric withstanding voltage	1000 V RMS @ 60 Hz while 1 mn
Spring wire contact resistance	20 m Ω max
IDC contact resistance	IDC: 2,5 m Ω max

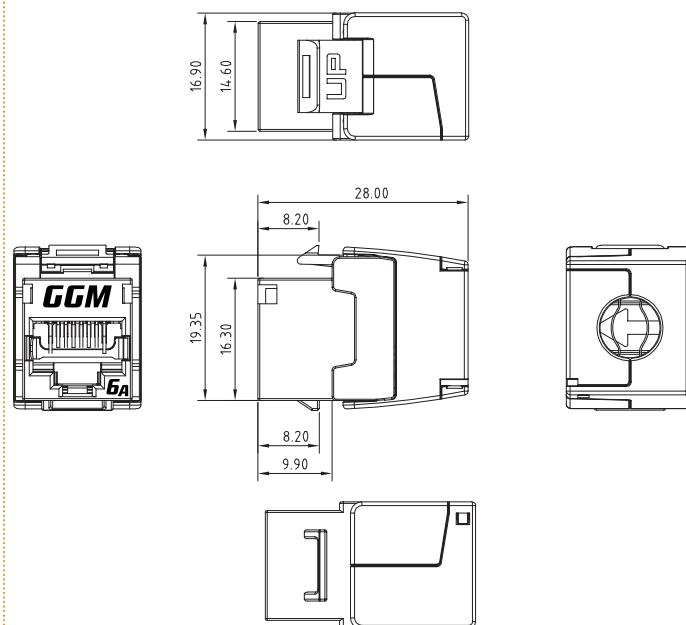
MECHANICAL

Retention	50 N while 60 s ±5 s
Insertion / Extraction life	750 cycles min.
IDC Wire Gauge	22 ~ 24 AWG

PHYSICAL

Housing	High-impact flame retardant plastic UL 94V-0
Spring wire	Phosphor bronze alloy plated with 50 μ of gold over 70 -100 μ of nickel
IDC	Phosphor bronze alloy with 100 μ 9:1 alloy Sn - Pb

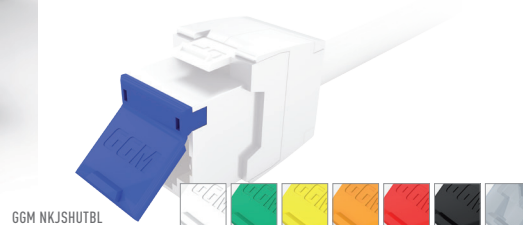
DIMENSIONS



GGM NKJS24PC6A05 + GGM NKJS48PC6A05



GGM NKJSC6ATL24



GGM NKJSHUTBL

PART NUMBERS

P/N	DESCRIPTION
GGM NKJSC6ATL	Keystone RJ45 jack CAT6A STP 10G Ed2.2 4PPoE
GGM NKJSC6ATL24	24x keystone RJ45 jack CAT6A STP 10G Ed2.2 4PPoE
GGM NKJS24PC6A05	24 ports patch panel 0.5U + 24x keystone RJ45 CAT6A STP (ID #01 to 24)
GGM NKJS48PC6A05	24 ports patch panel 0.5U + 24x keystone RJ45 CAT6A STP (ID #25 to 48)
GGM NKJSHUTWH	Packs of 24 white shutters for NKJ*

BL WH GN YL OG RD BK TR * NB : shutters available in 8 different colors, only need to change the last two letters of the P/N